



**SEYMOURGREEN**

AT THE HEART ♥ OF YOUR MOVE

## Weydown Close, Southfields, London, SW19

- ♥ Newly Refurbished
- ♥ Excellent for Transport
- ♥ Fabulous Fitted Kitchen
- ♥ Great Location
- ♥ Two Double Bedrooms
- ♥ Part Furnished

A stunning second floor flat with spacious accommodation comprising TWO DOUBLE BEDROOMS, large living room with SOUTH FACING BALCONY, modern newly fitted kitchen with integrated appliances, wonderful contemporary bathroom and separate WC. Weydown Close is a popular development ideally located for Southfields Tube Station and the wide-open spaces of Wimbledon Common, while both Wimbledon and Putney are both easily accessible. The development also offers off street permit car parking spaces and a secure lock up bike store for residents.

# To Let: £1,950 per month



Seymour Green, 483 Merton Road, London SW18 5LE

T: 020 8870 0111 F: 020 3302 9598 E: [southfields@seymour-green.co.uk](mailto:southfields@seymour-green.co.uk) W: [seymour-green.co.uk](http://seymour-green.co.uk)



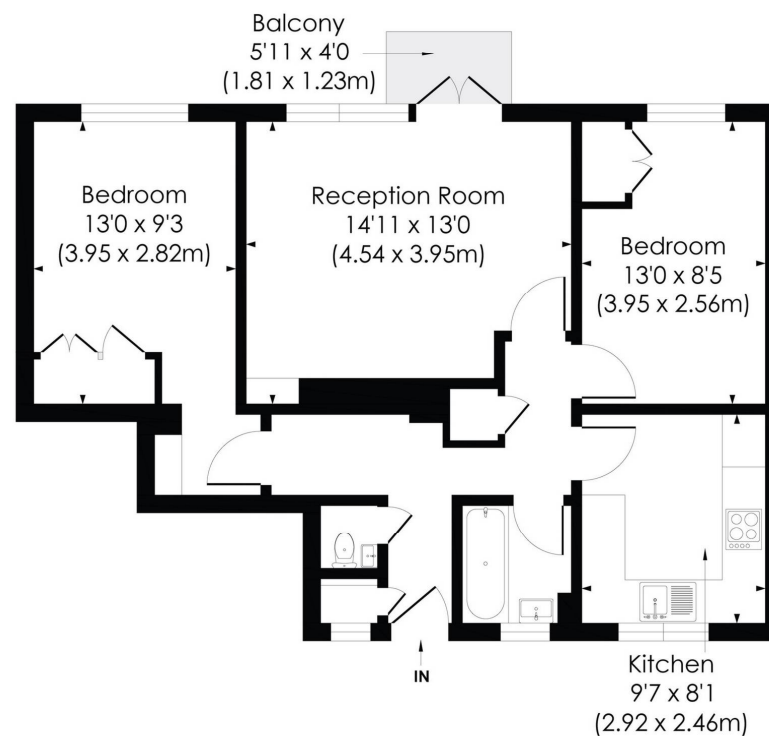
**SEYMOURGREEN**

AT THE HEART  OF YOUR MOVE

## WEYDOWN CLOSE, SW19

Approx. Gross Internal Floor Area

**663 Sq. ft/61.59 Sq. m**



SECOND FLOOR

© Pixangle Property Marketing Ltd. info@pixangle.com Tel: 0208 870 2118

**pixangle**  
PROPERTY MARKETING

This floor plan has been prepared for the purpose of illustration only in accordance with the latest RICS code of measuring practice and is not to scale. All measurements and areas are approximate and whilst every effort has been made to ensure the accuracy of the plan contained here, no responsibility is taken for any error, omission or misstatement.

# Weydown Close, Southfields, London, SW19

## To Let: £1,950 per month



Seymour Green, 483 Merton Road, London SW18 5LE  
T: 020 8870 0111 F: 020 3302 9598 E: [southfields@seymour-green.co.uk](mailto:southfields@seymour-green.co.uk) W: [seymour-green.co.uk](http://seymour-green.co.uk)



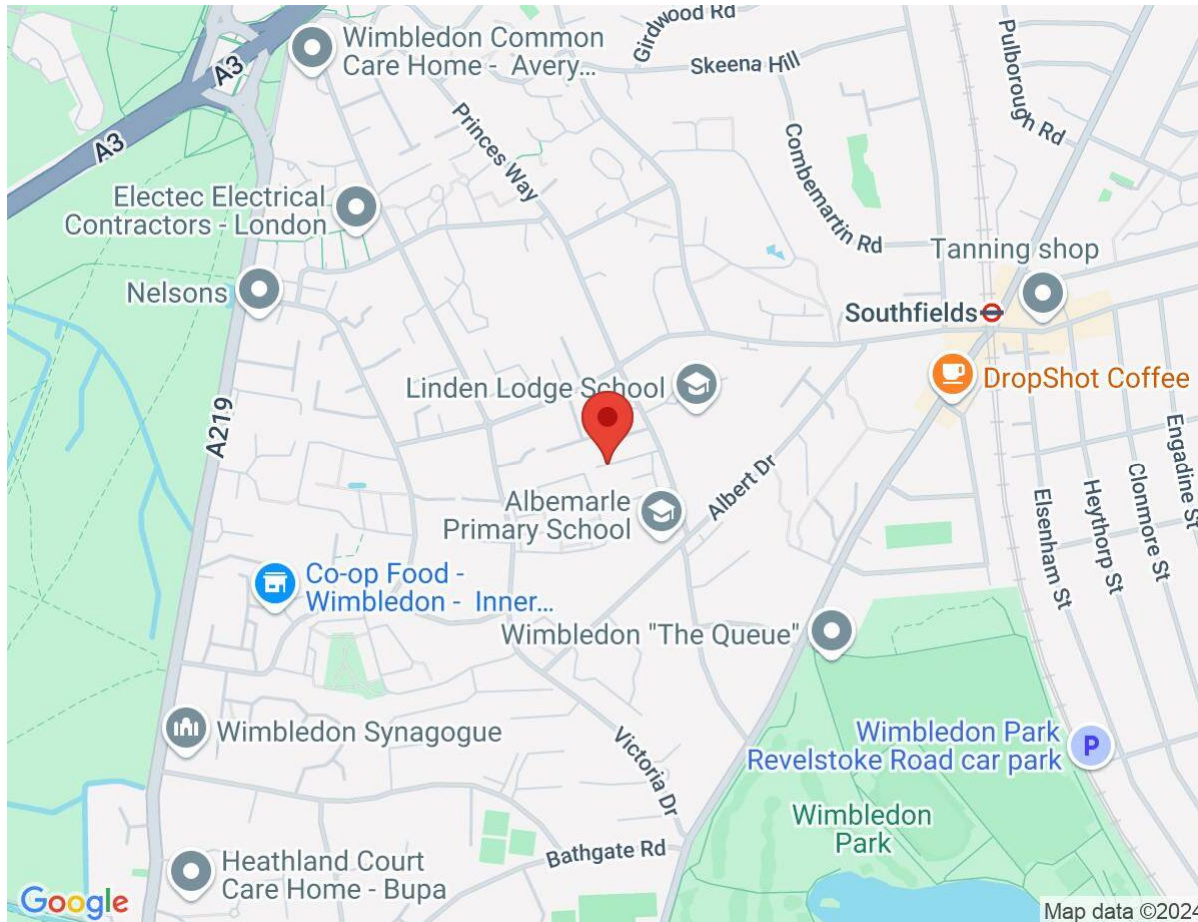


SEYMOURGREEN

AT THE HEART ♥ OF YOUR MOVE

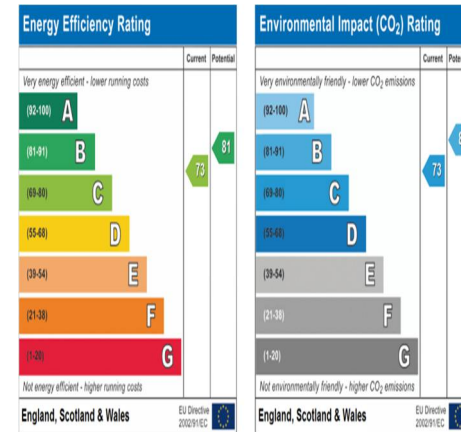
# Weydown Close, Southfields, London, SW19

## To Let: £1,950 per month



#### IMPORTANT NOTICE

Descriptions of the property are subjective and are used in good faith as an opinion and NOT as a statement of fact. Please make further specific enquires to ensure that our descriptions are likely to match any expectations you may have of the property. We have not tested any services, systems or appliances at this property. We strongly recommend that all the information we provide be verified by you on inspection, and by your Surveyor and Conveyancer.



Seymour Green, 483 Merton Road, London SW18 5LE

T: 020 8870 0111 F: 020 3302 9598 E: southfields@seymour-green.co.uk W: seymour-green.co.uk