



SEYMOURGREEN

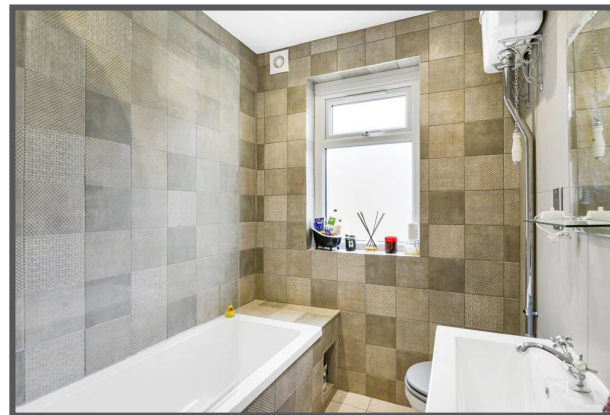
AT THE HEART ♥ OF YOUR MOVE

Bodmin Street, Earlsfield, London, SW18

- ♥ Stunning Maisonette
- ♥ Great for Transport
- ♥ Garden and Roof Terrace
- ♥ 150m to King Georges Park
- ♥ Immaculate Condition
- ♥ Excellent Location

A superb maisonette with 1290 sq. ft of accommodation over two floors, ideally located within easy reach of both Earlsfield Mainline Station and Southfields Tube Station, along with all the wonderful amenities both Earlsfield and Southfields have to offer, whilst the wide-open spaces of King Georges Park are literally at the end of the road. With a stunning character living room, modern and well fitted kitchen breakfast room, three bedrooms, two bathrooms, garden and roof terrace all presented in immaculate condition this property would make a perfect home for a family or professional sharer's alike.

To Let: £3,250 per month



Seymour Green, 483 Merton Road, London SW18 5LE

T: 020 8870 0111 F: 020 3302 9598 E: southfields@seymour-green.co.uk W: seymour-green.co.uk



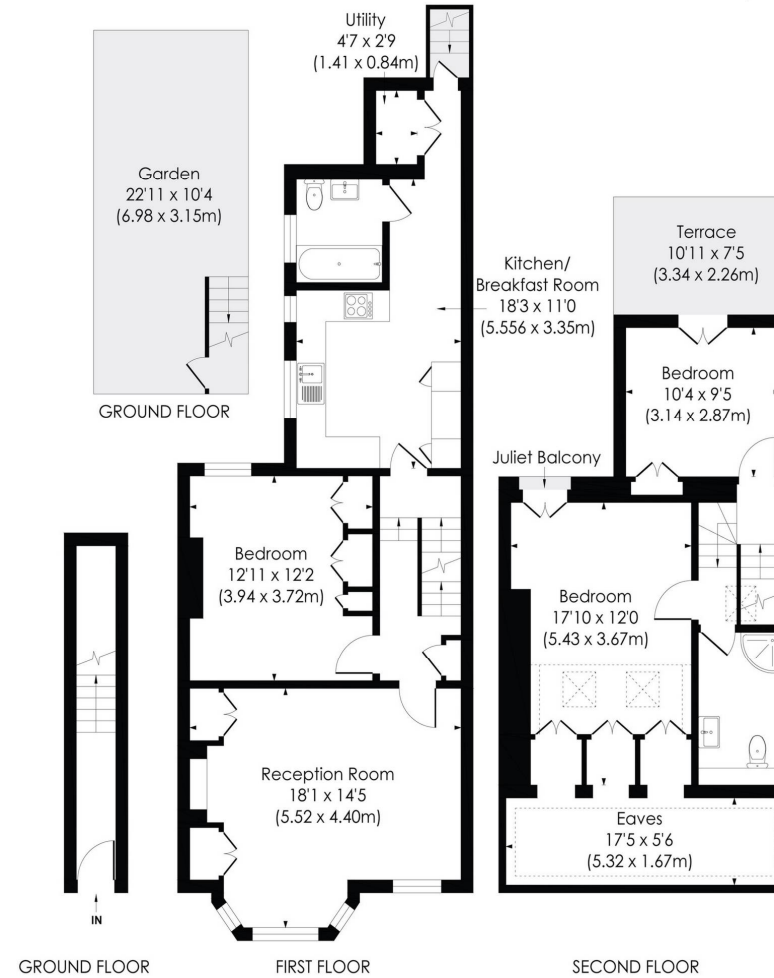
SEYMOURGREEN

AT THE HEART ♥ OF YOUR MOVE

BODMIN STREET, SW18

Approx. Gross Internal Floor Area

1290 Sq. ft/119.88 Sq. m (Incl. Eaves)



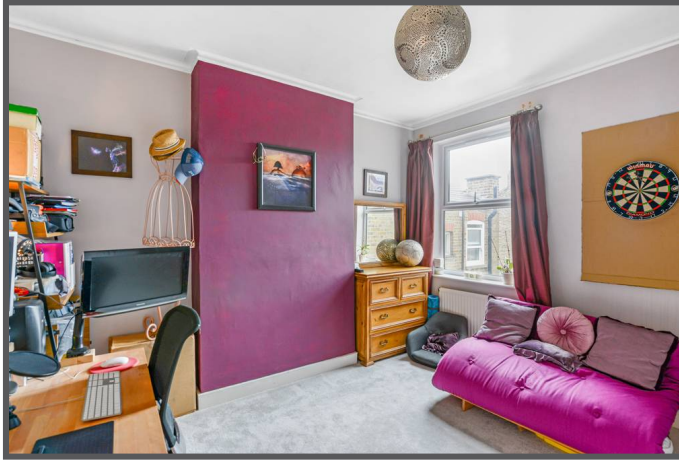
© Pixangle Property Marketing Ltd. info@pixangle.com Tel: 0208 870 2118

pixangle
PROPERTY MARKETING

This floor plan has been prepared for the purpose of illustration only in accordance with the latest RICS code of measuring practice and is not to scale. All measurements and areas are approximate and whilst every effort has been made to ensure the accuracy of the plan contained here, no responsibility is taken for any error, omission or misstatement.

Bodmin Street, Earlsfield, London, SW18

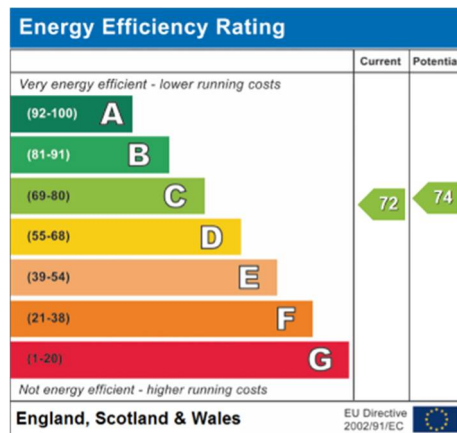
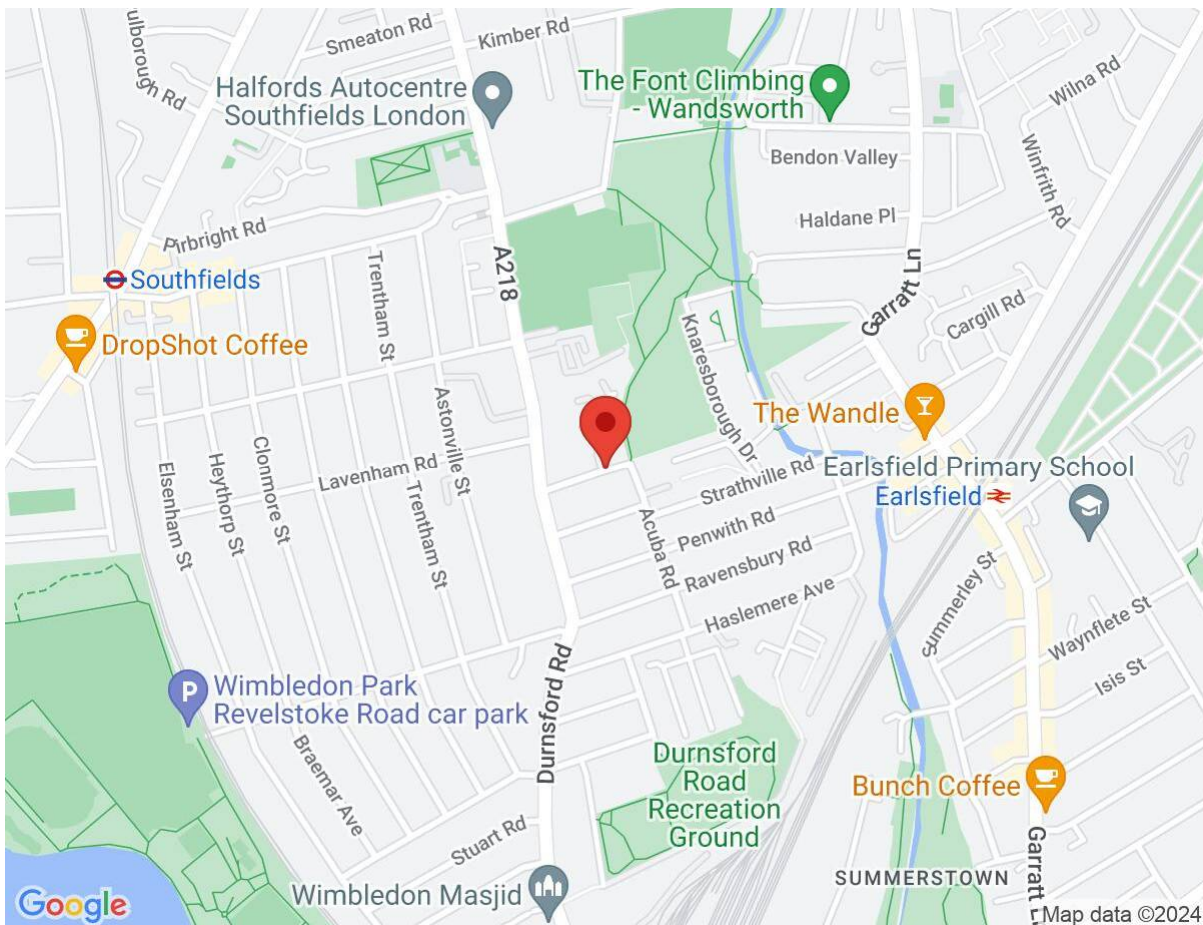
To Let: £3,250 per month



Seymour Green, 483 Merton Road, London SW18 5LE
T: 020 8870 0111 F: 020 3302 9598 E: southfields@seymour-green.co.uk W: seymour-green.co.uk

Bodmin Street, Earlsfield, London, SW18

To Let: £3,250 per month



IMPORTANT NOTICE
Descriptions of the property are subjective and are used in good faith as an opinion and NOT as a statement of fact. Please make further specific enquires to ensure that our descriptions are likely to match any expectations you may have of the property. We have not tested any services, systems or appliances at this property. We strongly recommend that all the information we provide be verified by you on inspection, and by your Surveyor and Conveyancer.

Seymour Green, 483 Merton Road, London SW18 5LE
T: 020 8870 0111 F: 020 3302 9598 E: southfields@seymour-green.co.uk W: seymour-green.co.uk