



SEYMOURGREEN

AT THE HEART ♥ OF YOUR MOVE

Elsenham Street, Southfields, London, SW18

- ♥ Southfields Grid
- ♥ Two Bathrooms
- ♥ Great for Transport
- ♥ Wimbledon Park Close By
- ♥ Two Double Bedrooms
- ♥ Excellent Built in Storage

A SPACIOUS period conversion flat over two floors ideally located on SOUTHFIELDS GRID being just a few minutes from SOUTHFIELDS TUBE STATION, an excellent selection of shops and eateries, along with the wide open spaces of WIMBLEDON PARK. The well-proportioned accommodation comprises character living room, well fitted kitchen, master bedroom with en-suite shower room, a further generous double bedroom and bathroom. The property has very good storage space throughout and is being let unfurnished.

To Let: £2,200 per month



Seymour Green, 483 Merton Road, London SW18 5LE
T: 020 8870 0111 F: 020 3302 9598 E: southfields@seymour-green.co.uk W: seymour-green.co.uk

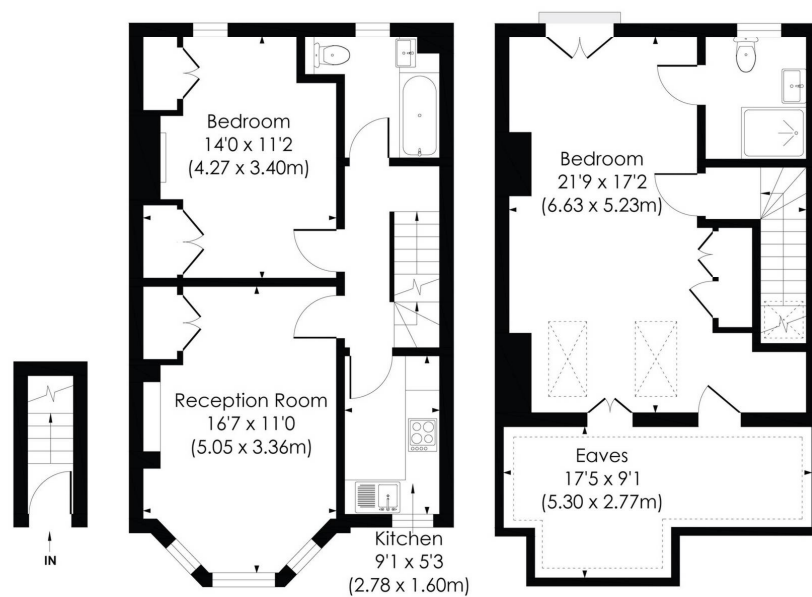


SEYMOURGREEN

AT THE HEART ♥ OF YOUR MOVE

ELSENHAM STREET, SW18

Approx. Gross Internal Floor Area
1035 Sq. ft/96.20 Sq. m (Including Eaves)



GROUND FLOOR

FIRST FLOOR

SECOND FLOOR

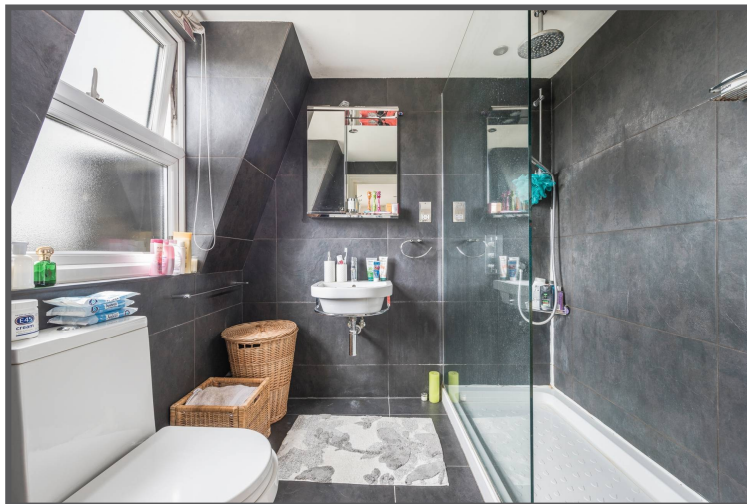
pixangle
PROPERTY MARKETING

This floor plan has been prepared for the purpose of illustration only in accordance with the latest RICS code of measuring practice and is not to scale. All measurements and areas are approximate and whilst every effort has been made to ensure the accuracy of the plan contained here, no responsibility is taken for any error, omission or misstatement.

© Pixangle Property Marketing Ltd. info@pixangle.com Tel: 0208 870 2118

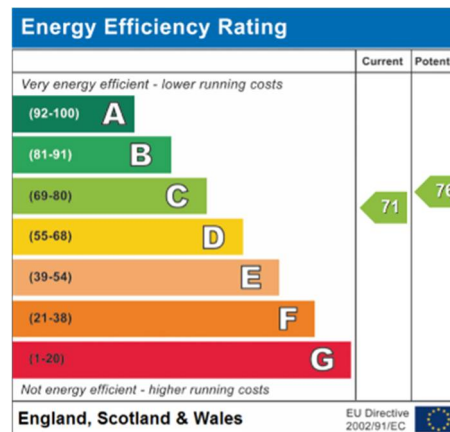
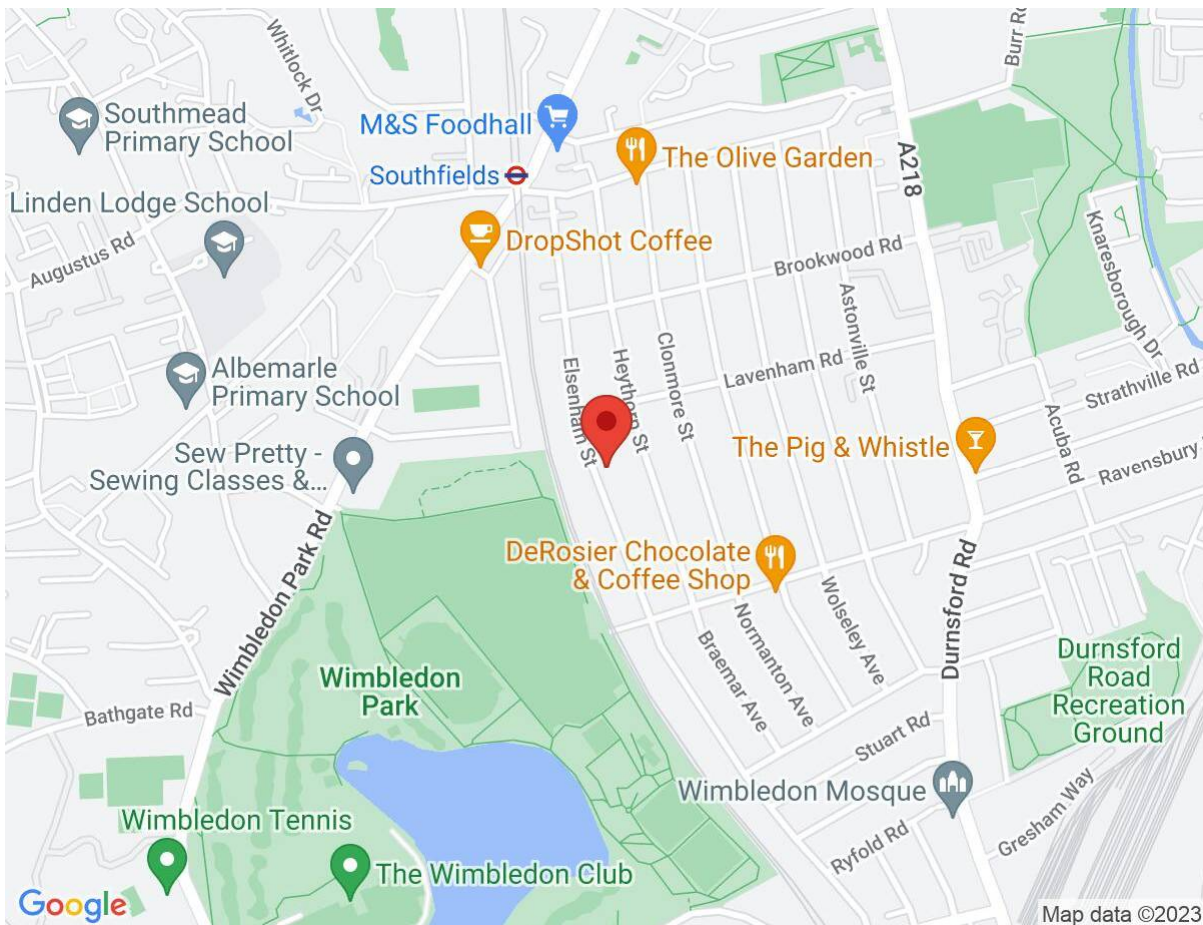
Elsenham Street, Southfields, London, SW18

To Let: £2,200 per month



Elsenham Street, Southfields, London, SW18

To Let: £2,200 per month



IMPORTANT NOTICE
Descriptions of the property are subjective and are used in good faith as an opinion and NOT as a statement of fact. Please make further specific enquires to ensure that our descriptions are likely to match any expectations you may have of the property. We have not tested any services, systems or appliances at this property. We strongly recommend that all the information we provide be verified by you on inspection, and by your Surveyor and Conveyancer.

Seymour Green, 483 Merton Road, London SW18 5LE
T: 020 8870 0111 F: 020 3302 9598 E: southfields@seymour-green.co.uk W: seymour-green.co.uk