



SEYMOURGREEN
AT THE HEART ♥ OF YOUR MOVE

Balvernie Grove, Southfields, London, SW18

- ♥ Stunning Period House
- ♥ Wonderful Family Bathroom
- ♥ Two Reception Rooms
- ♥ Sheringdale School
- ♥ Three Bedrooms
- ♥ Close to Southfields Village

This beautifully presented home retains many period features and offers spacious accommodation over three floors comprising living room, dining room and well fitted kitchen on the ground floor, two double bedrooms, superb large family bathroom with roll top bath and separate power shower and guest WC on the first floor with a further double bedroom on the top floor. The well-proportioned accommodation is complimented by a low maintenance rear garden of approx 22'. The property further benefits from wooden flooring on the ground floor, Travertine tiles in the bathroom, a fully equipped kitchen and great storage space via a well-lit and easy accessible attic. Balvernie Grove is a well-regarded residential road and is very well situated for local amenities. The highly regarded Sheringdale Junior School is at the end of the road, whilst Southfields Tube Station is within a 5 minute walk.



To Let: £2,900 per month

Seymour Green, 483 Merton Road, London SW18 5LE

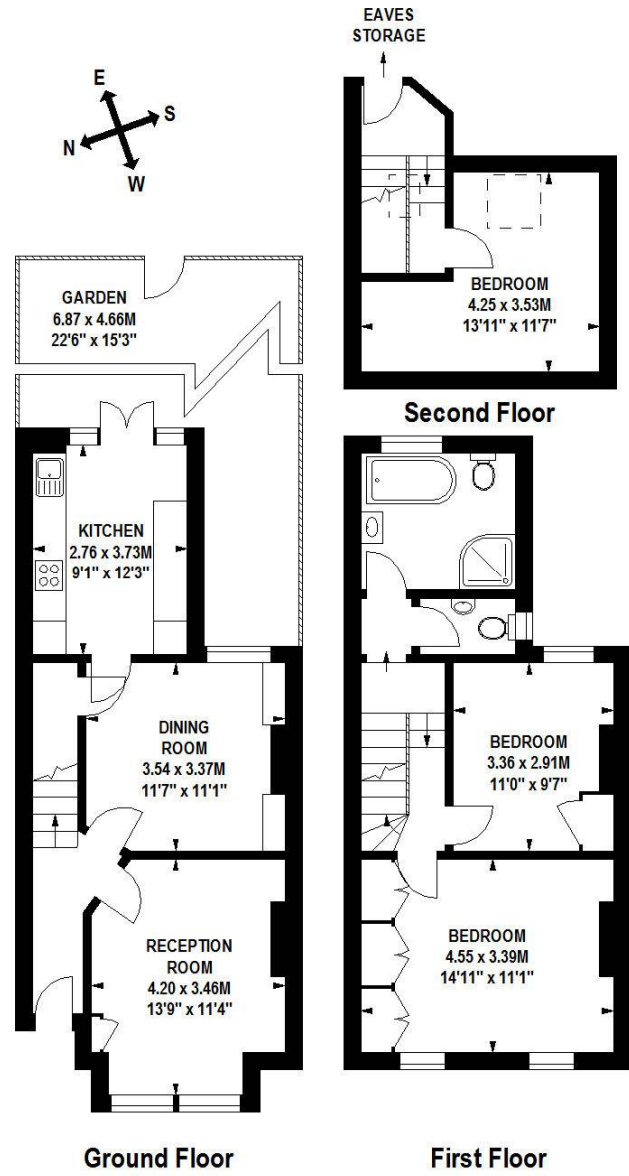
T: 020 8870 0111 F: 020 3302 9598 E: southfields@seymour-green.co.uk W: seymour-green.co.uk



SEYMOURGREEN
AT THE HEART ♥ OF YOUR MOVE

Balvernie Grove, SW18

Approximate gross internal area
102 sq.m / 1097 sq. ft



Floorplan produced for SEYMOUR GREEN by Mays Floorplans © . Tel 020 8871 4668
Illustration for identification purposes only, not to scale
All measurements are maximum, and includes wardrobes and window bays where applicable



SEYMOURGREEN
AT THE HEART ♥ OF YOUR MOVE

Balvernie Grove, Southfields, London, SW18

To Let: £2,900 per month



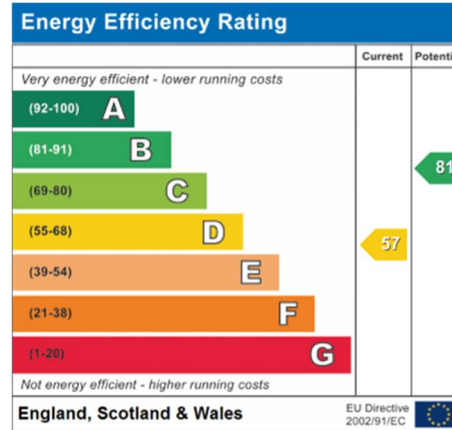
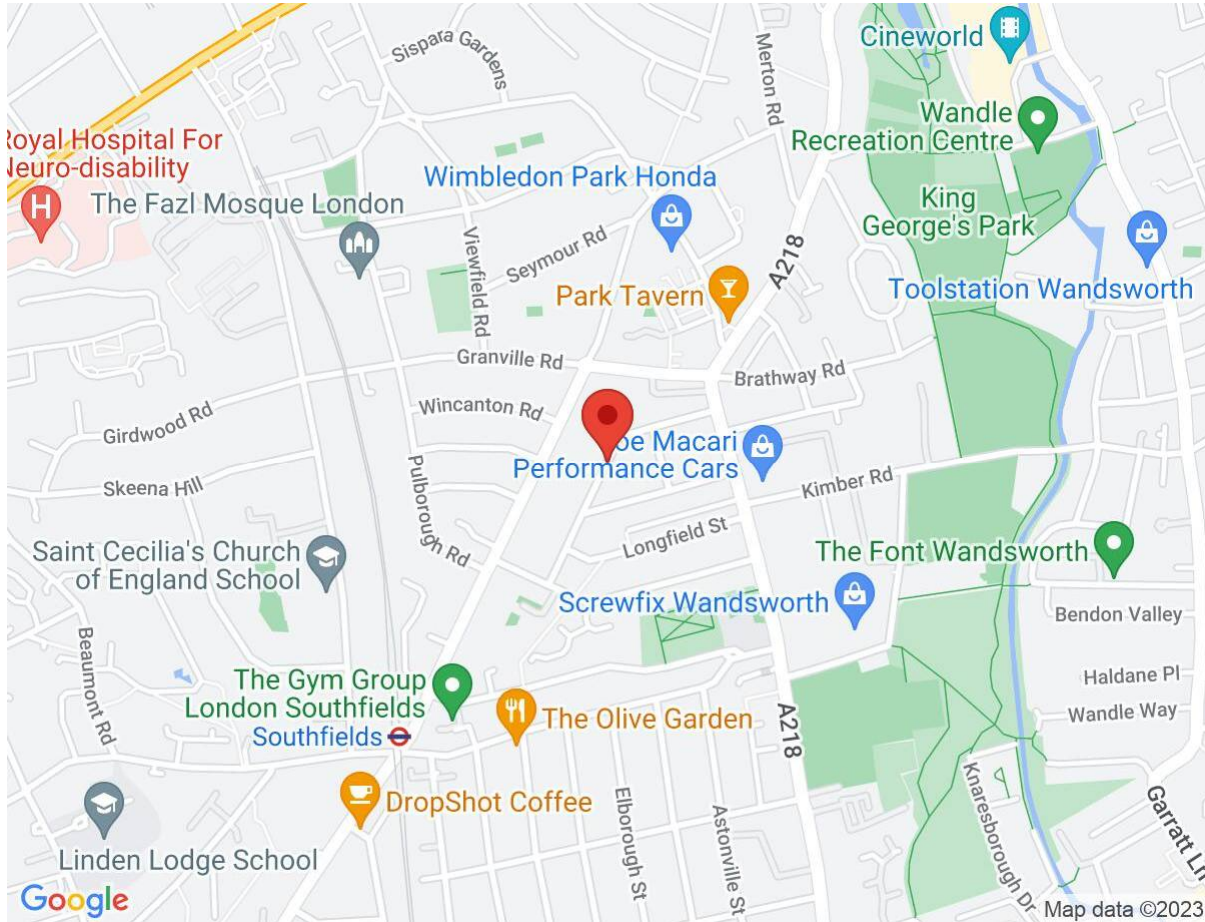
Seymour Green, 483 Merton Road, London SW18 5LE
T: 020 8870 0111 F: 020 3302 9598 E: southfields@seymour-green.co.uk W: seymour-green.co.uk



SEYMOURGREEN
AT THE HEART OF YOUR MOVE

Balvernie Grove, Southfields, London, SW18

To Let: £2,900 per month



IMPORTANT NOTICE
Descriptions of the property are subjective and are used in good faith as an opinion and NOT as a statement of fact. Please make further specific enquires to ensure that our descriptions are likely to match any expectations you may have of the property. We have not tested any services, systems or appliances at this property. We strongly recommend that all the information we provide be verified by you on inspection, and by your Surveyor and Conveyancer.

Seymour Green, 483 Merton Road, London SW18 5LE
T: 020 8870 0111 F: 020 3302 9598 E: southfields@seymour-green.co.uk W: seymour-green.co.uk