



SEYMOURGREEN
AT THE HEART ♥ OF YOUR MOVE

Sutherland Grove, Southfields, London, SW18

- ♥ Available Immediately
- ♥ Stunning Family Home
- ♥ Sought After Location
- ♥ Excellent Local Schools
- ♥ Large Rear Garden
- ♥ Great for Transport

A fantastic semi detached corner property that has been recently refurbished to an excellent standard to provide the perfect family home. The accommodation comprises on the ground floor a wonderful entrance hall, double reception room, stunning kitchen diner, utility and guest WC with the entire ground floor benefitting from under floor heating, four bedrooms and two bathrooms with one en suite on the first floor and further bedroom with en suite on the top floor. Sutherland Grove is ideally located for the areas many excellent schools, whilst Southfields Tube and Village are just a short walk.

To Let: £5,000 per month



Seymour Green, 483 Merton Road, London SW18 5LE
T: 020 8870 0111 F: 020 3302 9598 E: southfields@seymour-green.co.uk W: seymour-green.co.uk



SEYMOURGREEN
AT THE HEART ♥ OF YOUR MOVE

SUTHERLAND GROVE, SW18

Approx. Gross Internal Floor Area

2695 Sq. ft/250.39 Sq. m

Including Eaves and Garage



© Pixangle Property Marketing Ltd. info@pixangle.com Tel: 0208 870 2118

pixangle
PROPERTY MARKETING

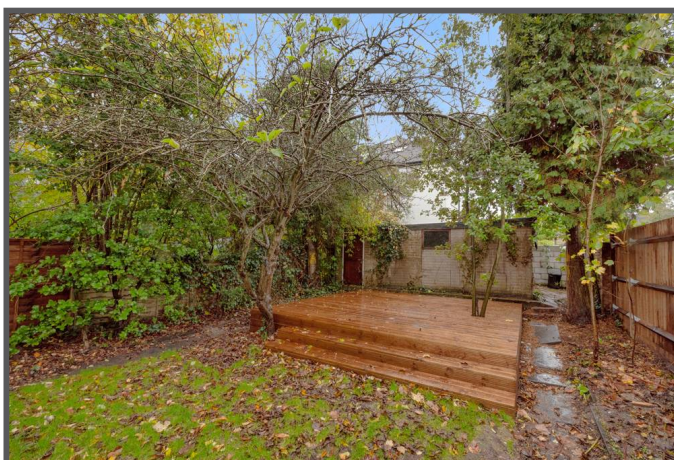
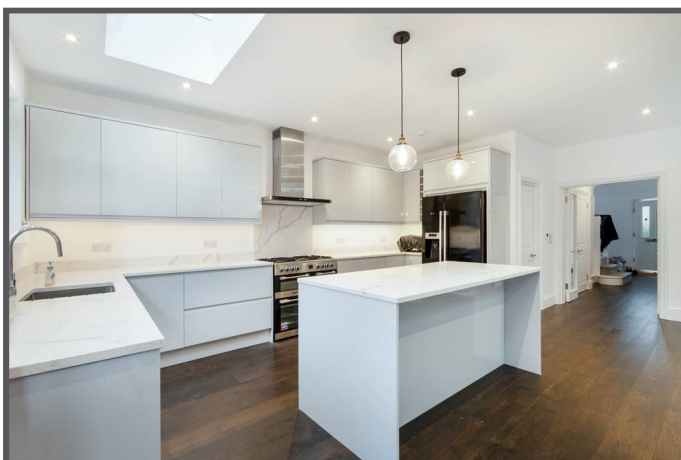
This floor plan has been prepared for the purpose of illustration only in accordance with the latest RICS code of measuring practice and is not to scale. All measurements and areas are approximate and whilst every effort has been made to ensure the accuracy of the plan contained here, no responsibility is taken for any error, omission or misstatement.



SEYMOURGREEN
AT THE HEART ♥ OF YOUR MOVE

Sutherland Grove, Southfields, London, SW18

To Let: £5,000 per month



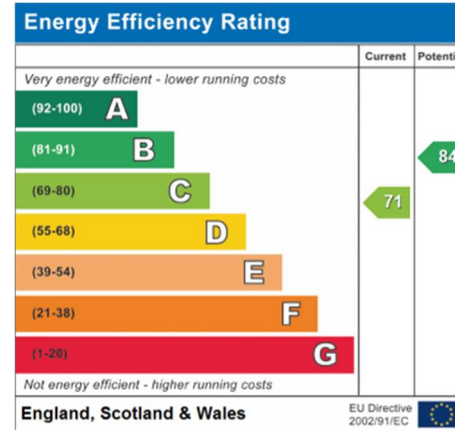
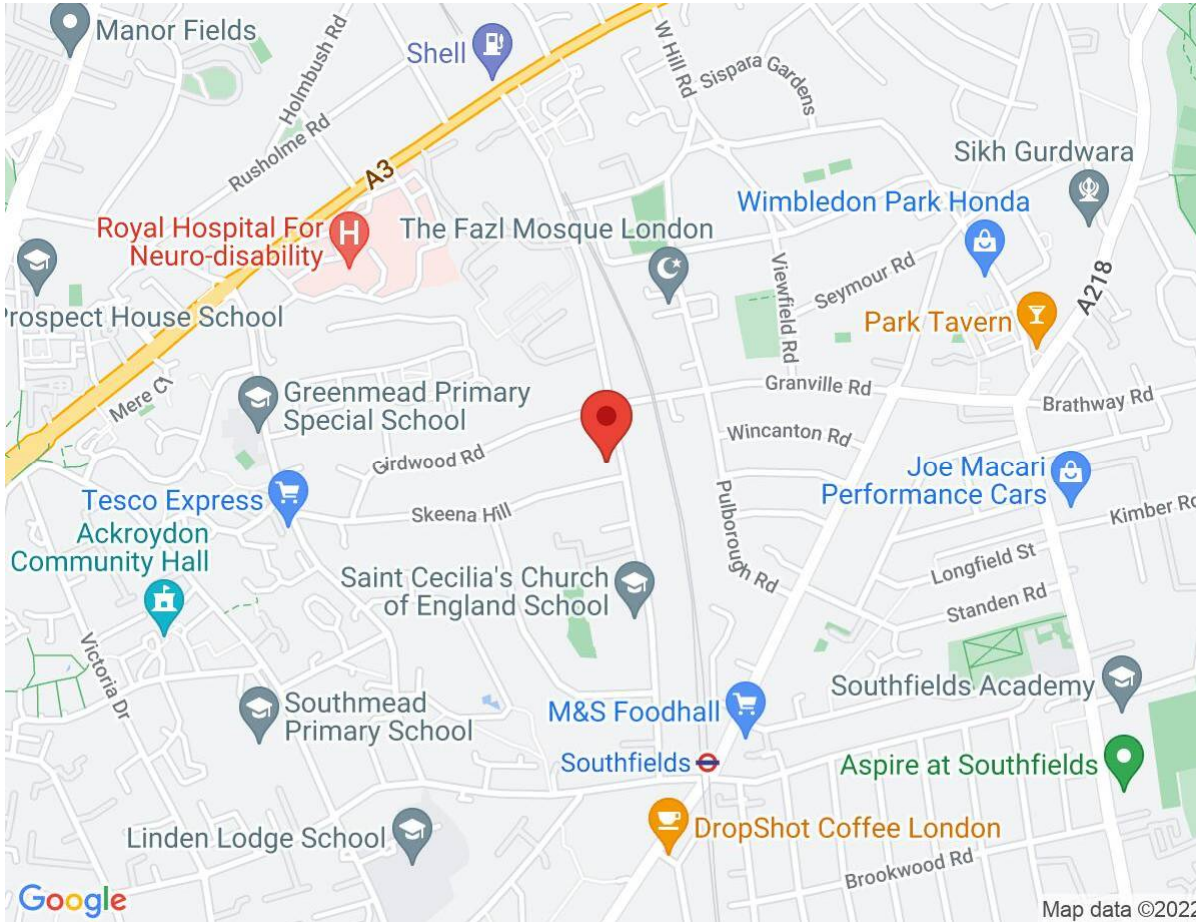
Seymour Green, 483 Merton Road, London SW18 5LE
T: 020 8870 0111 F: 020 3302 9598 E: southfields@seymour-green.co.uk W: seymour-green.co.uk



SEYMOURGREEN
AT THE HEART OF YOUR MOVE

Sutherland Grove, Southfields, London, SW18

To Let: £5,000 per month



IMPORTANT NOTICE
Descriptions of the property are subjective and are used in good faith as an opinion and NOT as a statement of fact. Please make further specific enquires to ensure that our descriptions are likely to match any expectations you may have of the property. We have not tested any services, systems or appliances at this property. We strongly recommend that all the information we provide be verified by you on inspection, and by your Surveyor and Conveyancer.

Seymour Green, 483 Merton Road, London SW18 5LE
T: 020 8870 0111 F: 020 3302 9598 E: southfields@seymour-green.co.uk W: seymour-green.co.uk