



SEYMOURGREEN
AT THE HEART ♥ OF YOUR MOVE

Revelstoke Road, Southfields, London, SW18

- ♥ Excellent Local Schools
- ♥ Available Immediately
- ♥ Walking Distance to Tube and Rail
- ♥ Spacious Accommodation
- ♥ Close to Parks and Shops
- ♥ Patio Garden

A Wonderful 1056 sq. foot maisonette with THREE DOUBLE BEDROOMS, located on the ever popular SOUTHFIELDS GRID, so within walking distance to TUBE and RAIL along with PARKS, SHOPS and numerous highly regarded LOCAL SCHOOLS. With a spacious living room, eat in kitchen, separate office and modern bathroom all complimented by the patio garden this property would suit a family or professional sharer.

To Let: £2,950 per month

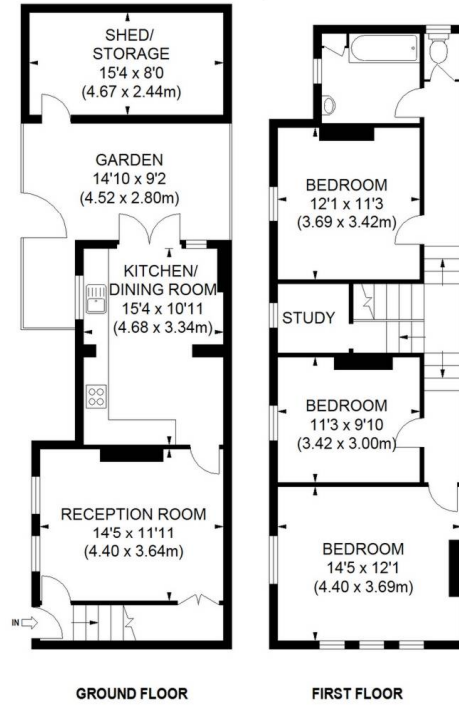


Seymour Green, 483 Merton Road, London SW18 5LE

T: 020 8870 0111 F: 020 3302 9598 E: southfields@seymour-green.co.uk W: seymour-green.co.uk



SEYMOURGREEN
AT THE HEART ♥ OF YOUR MOVE



APPROX. GROSS INTERNAL FLOOR AREA 1066 SQ FT / 98.10 SQ M
(EXCLUDING OUT BUILDING)

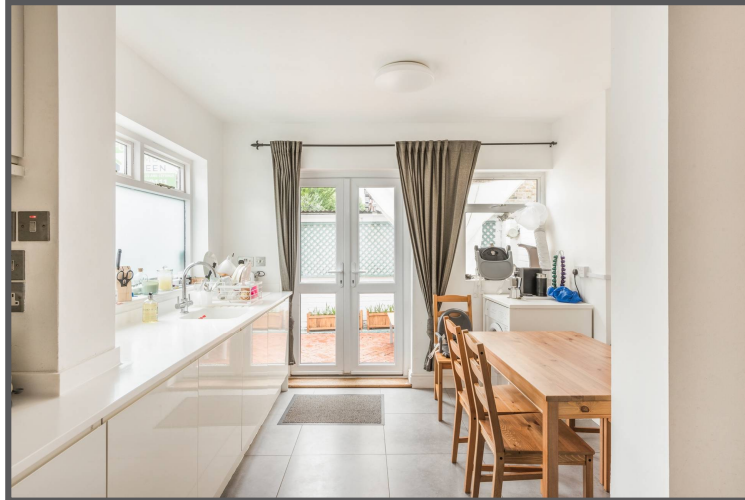
Illustration for identification purposes only, not to scale
All measurements are maximum, and includes wardrobes and window bays where applicable
Prepared by Pixangle © . Tel 020 8870 2118



SEYMOURGREEN
AT THE HEART ♥ OF YOUR MOVE

Revelstoke Road, Southfields, London, SW18

To Let: £2,950 per month



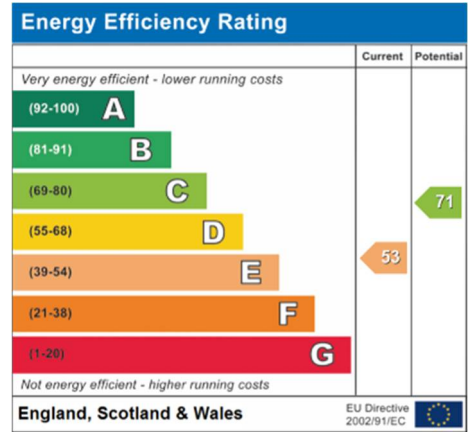
Seymour Green, 483 Merton Road, London SW18 5LE
T: 020 8870 0111 F: 020 3302 9598 E: southfields@seymour-green.co.uk W: seymour-green.co.uk



SEYMOURGREEN
AT THE HEART ♥ OF YOUR MOVE

Revelstoke Road, Southfields, London, SW18

To Let: £2,950 per month



IMPORTANT NOTICE
Descriptions of the property are subjective and are used in good faith as an opinion and NOT as a statement of fact. Please make further specific enquires to ensure that our descriptions are likely to match any expectations you may have of the property. We have not tested any services, systems or appliances at this property. We strongly recommend that all the information we provide be verified by you on inspection, and by your Surveyor and Conveyancer.

Seymour Green, 483 Merton Road, London SW18 5LE
T: 020 8870 0111 F: 020 3302 9598 E: southfields@seymour-green.co.uk W: seymour-green.co.uk