



**SEYMOURGREEN**  
AT THE HEART ♥ OF YOUR MOVE

## Whitehead Close, Earlsfield, London, SW18

- ♥ Stunning Family Home
- ♥ Wonderful Kitchen Diner
- ♥ Off Street Parking
- ♥ Spacious Living Accommodation
- ♥ Wood Flooring Throughout
- ♥ Three Bedrooms

A stunning contemporary family home superbly located to take advantage of the areas excellent transport facilities along with a wide selection of shops and numerous highly regarded schools being within easy reach. Providing flexible accommodation over 3 floors with large family kitchen diner occupying the entire lower level, living room and bedroom 3 on the ground floor along with guest cloakroom, with master bedroom and en-suite bathroom further bedroom and bathroom on the first floor. The house also benefits from a low maintenance rear garden, allocated off street parking, is immaculate throughout and ready for an April let.

# To Let: £3,000 per month



Seymour Green, 483 Merton Road, London SW18 5LE

T: 020 8870 0111 F: 020 3302 9598 E: southfields@seymour-green.co.uk W: seymour-green.co.uk

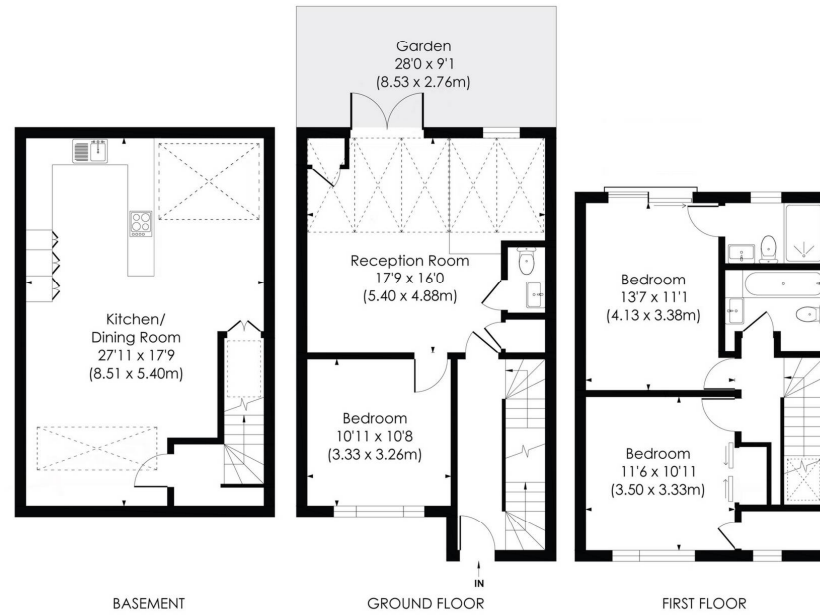


**SEYMOURGREEN**  
AT THE HEART ♥ OF YOUR MOVE

## BEDFORD VILLAS, SW18

Approx. Gross Internal Floor Area

**1425 Sq. ft/132.36 Sq. m**



© Pixangle Property Marketing Ltd. info@pixangle.com Tel: 0208 870 2118

**pixangle**  
PROPERTY MARKETING

This floor plan has been prepared for the purpose of illustration only in accordance with the latest RICS code of measuring practice and is not to scale. All measurements and areas are approximate and whilst every effort has been made to ensure the accuracy of the plan contained here, no responsibility is taken for any error, omission or misstatement.



**SEYMOURGREEN**  
AT THE HEART ♥ OF YOUR MOVE

# Whitehead Close, Earlsfield, London, SW18

## To Let: £3,000 per month



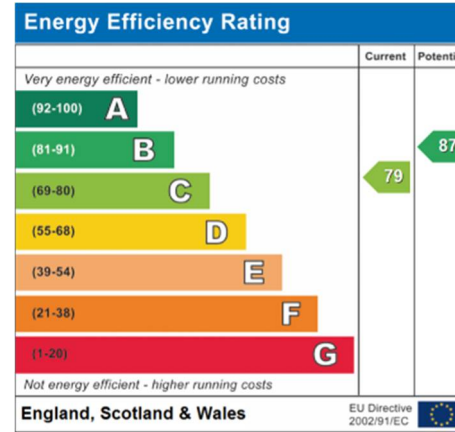
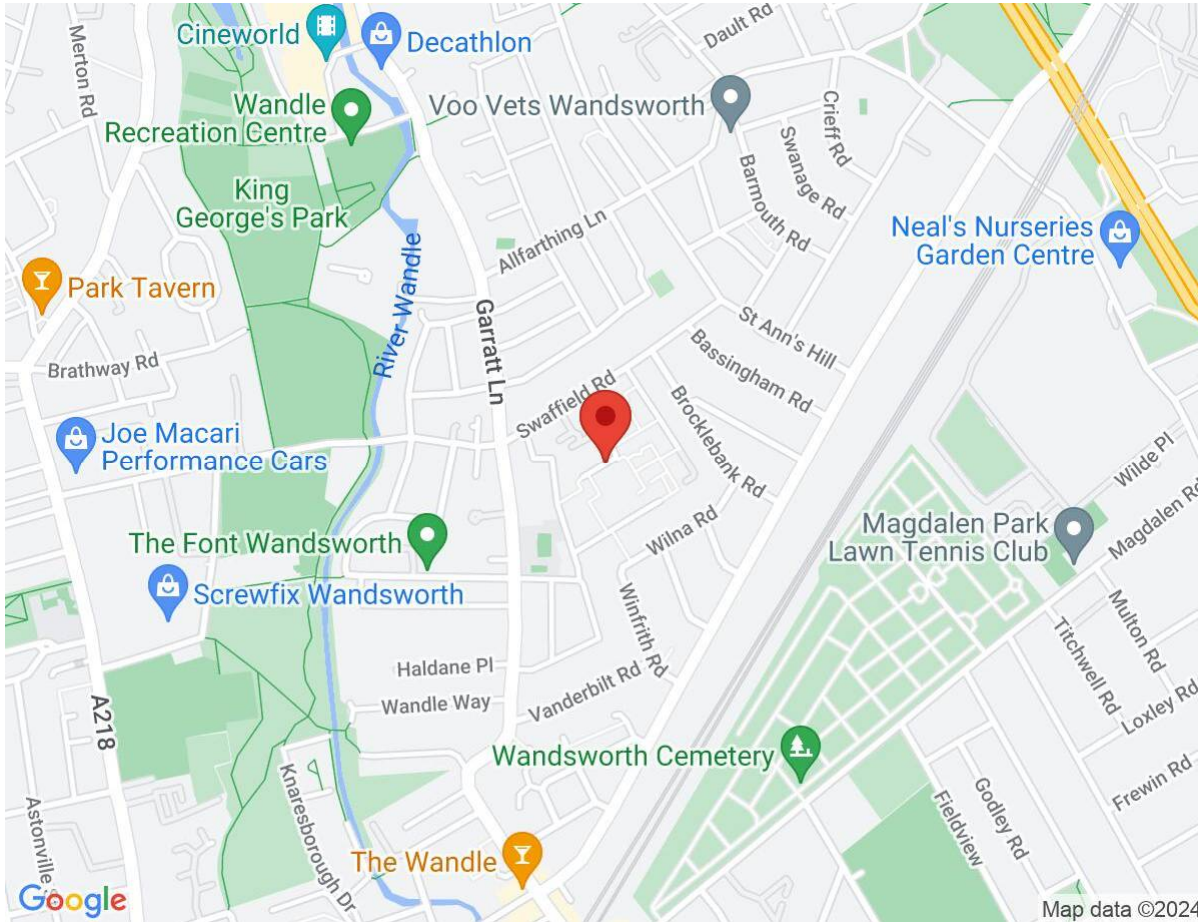
Seymour Green, 483 Merton Road, London SW18 5LE  
T: 020 8870 0111 F: 020 3302 9598 E: [southfields@seymour-green.co.uk](mailto:southfields@seymour-green.co.uk) W: [seymour-green.co.uk](http://seymour-green.co.uk)



**SEYMOURGREEN**  
AT THE HEART ♥ OF YOUR MOVE

# Whitehead Close, Earlsfield, London, SW18

## To Let: £3,000 per month



**IMPORTANT NOTICE**  
Descriptions of the property are subjective and are used in good faith as an opinion and NOT as a statement of fact. Please make further specific enquires to ensure that our descriptions are likely to match any expectations you may have of the property. We have not tested any services, systems or appliances at this property. We strongly recommend that all the information we provide be verified by you on inspection, and by your Surveyor and Conveyancer.

Seymour Green, 483 Merton Road, London SW18 5LE  
T: 020 8870 0111 F: 020 3302 9598 E: southfields@seymour-green.co.uk W: seymour-green.co.uk