



SEYMOURGREEN
AT THE HEART ♥ OF YOUR MOVE

Allenford House, Tunworth Crescent, London, SW15

- ♥ Two Double Bedrooms
- ♥ Excellent Transport Facilities
- ♥ Large Living Room
- ♥ Available Immediately
- ♥ Great Views
- ♥ Unfurnished

A Spacious fourth floor flat boasting great views towards Richmond Park, with two double bedrooms, large living room with wood floors and door to a generous balcony, fitted kitchen and modern bathroom. Presented in very good order throughout the property is nicely located with Richmond Park a short walk, along with the excellent bus services 265 to Putney Bridge, 493 to Richmond and Wimbledon, 430 to South Kensington. Available immediately unfurnished.

To Let: £1,650 per month



Seymour Green, 483 Merton Road, London SW18 5LE

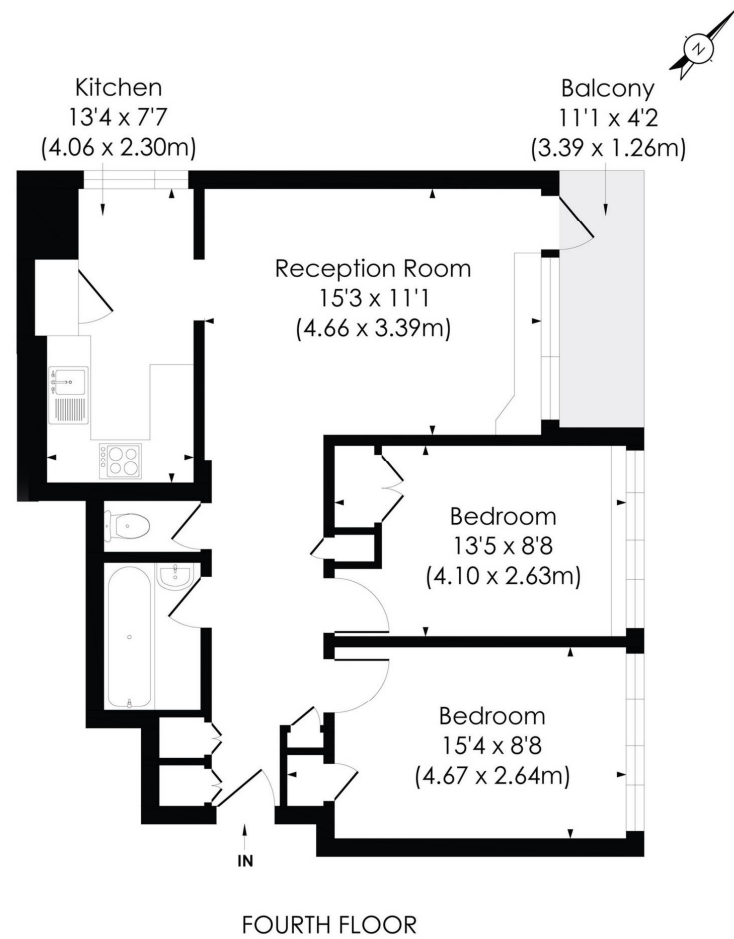
T: 020 8870 0111 F: 020 3302 9598 E: southfields@seymour-green.co.uk W: seymour-green.co.uk



SEYMOURGREEN
AT THE HEART ♥ OF YOUR MOVE

TUNWORTH CRESCENT, SW15

Approx. Gross Internal Floor Area
676 Sq. ft/62.89 Sq. m



© Pixangle Property Marketing Ltd. info@pixangle.com Tel: 0208 870 2118

pixangle
PROPERTY MARKETING

This floor plan has been prepared for the purpose of illustration only in accordance with the latest RICS code of measuring practice and is not to scale. All measurements and areas are approximate and whilst every effort has been made to ensure the accuracy of the plan contained here, no responsibility is taken for any error, omission or misstatement.

Allenford House, Tunworth Crescent, London, SW15

To Let: £1,650 per month

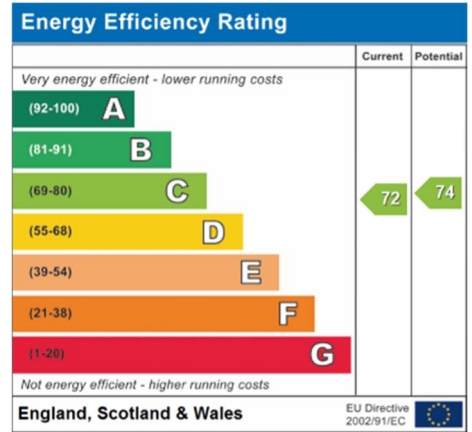
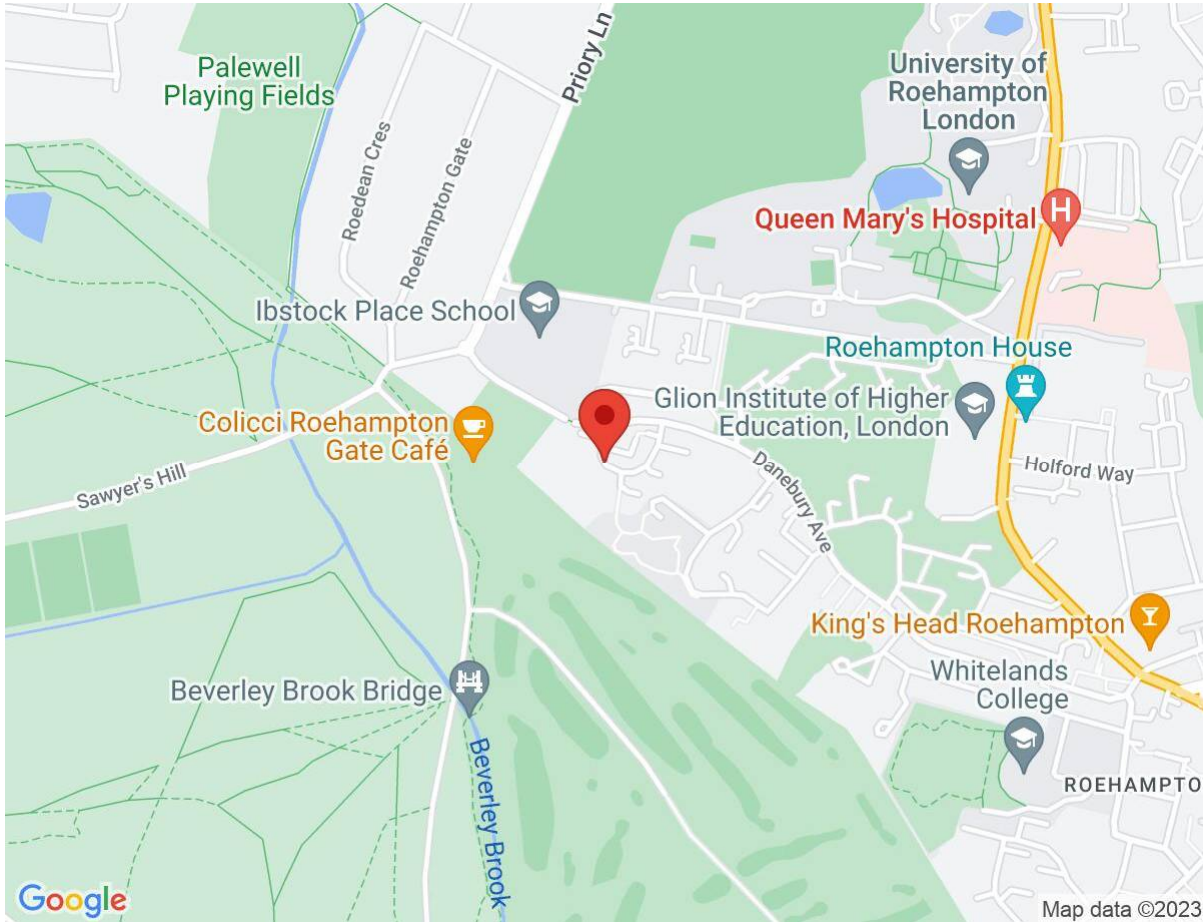




SEYMOURGREEN
AT THE HEART OF YOUR MOVE

Allenford House, Tunworth Crescent, London, SW15

To Let: £1,650 per month



IMPORTANT NOTICE
Descriptions of the property are subjective and are used in good faith as an opinion and NOT as a statement of fact. Please make further specific enquires to ensure that our descriptions are likely to match any expectations you may have of the property. We have not tested any services, systems or appliances at this property. We strongly recommend that all the information we provide be verified by you on inspection, and by your Surveyor and Conveyancer.

Seymour Green, 483 Merton Road, London SW18 5LE
T: 020 8870 0111 F: 020 3302 9598 E: southfields@seymour-green.co.uk W: seymour-green.co.uk