



**SEYMOURGREEN**  
AT THE HEART ♥ OF YOUR MOVE

## Penwith Road, Southfields, London, SW18

- ♥ 1 or 2 Double Bedrooms
- ♥ Private Rear Garden
- ♥ Available Immediately
- ♥ 6 Minutes Earlsfield Station
- ♥ Freshly Painted Throughout
- ♥ Period Features

A very well presented maisonette with flexible accommodation located on the popular Penwith Road, being just 6 minutes walk to Earlsfield Mainline Station and the amenities of Garratt Lane. The property comprises 1 or 2 bedrooms, living room, modern bathroom and fitted kitchen and has just been decorated throughout, whilst retaining many period features including wooden floors, along with a private rear garden and is available immediately.

# To Let: £1,800 per month



Seymour Green, 483 Merton Road, London SW18 5LE

T: 020 8870 0111 F: 020 3302 9598 E: [southfields@seymour-green.co.uk](mailto:southfields@seymour-green.co.uk) W: [seymour-green.co.uk](http://seymour-green.co.uk)

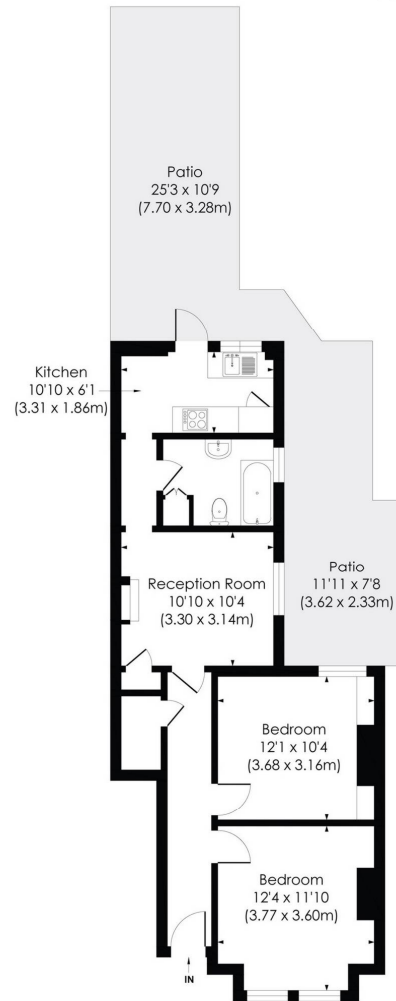


**SEYMOURGREEN**  
AT THE HEART  OF YOUR MOVE

## PENWITH ROAD, SW18

Approx. Gross Internal Floor Area

**637 Sq. ft/60.96 Sq. m**



GROUND FLOOR

© Pixangle Property Marketing Ltd. info@pixangle.com Tel: 0208 870 2118

**pixangle**  
PROPERTY MARKETING

This floor plan has been prepared for the purpose of illustration only in accordance with the latest RICS code of measuring practice and is not to scale. All measurements and areas are approximate and whilst every effort has been made to ensure the accuracy of the plan contained here, no responsibility is taken for any error, omission or misstatement.



**SEYMOURGREEN**  
AT THE HEART ♥ OF YOUR MOVE

# Penwith Road, Southfields, London, SW18

## To Let: £1,800 per month



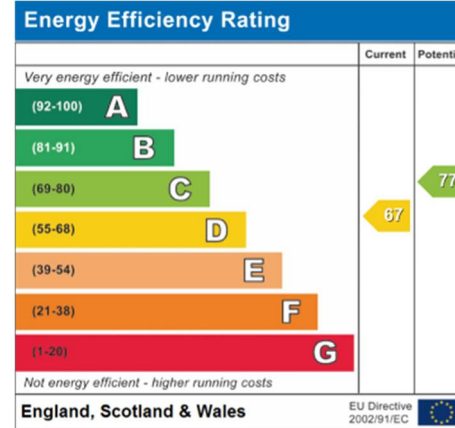
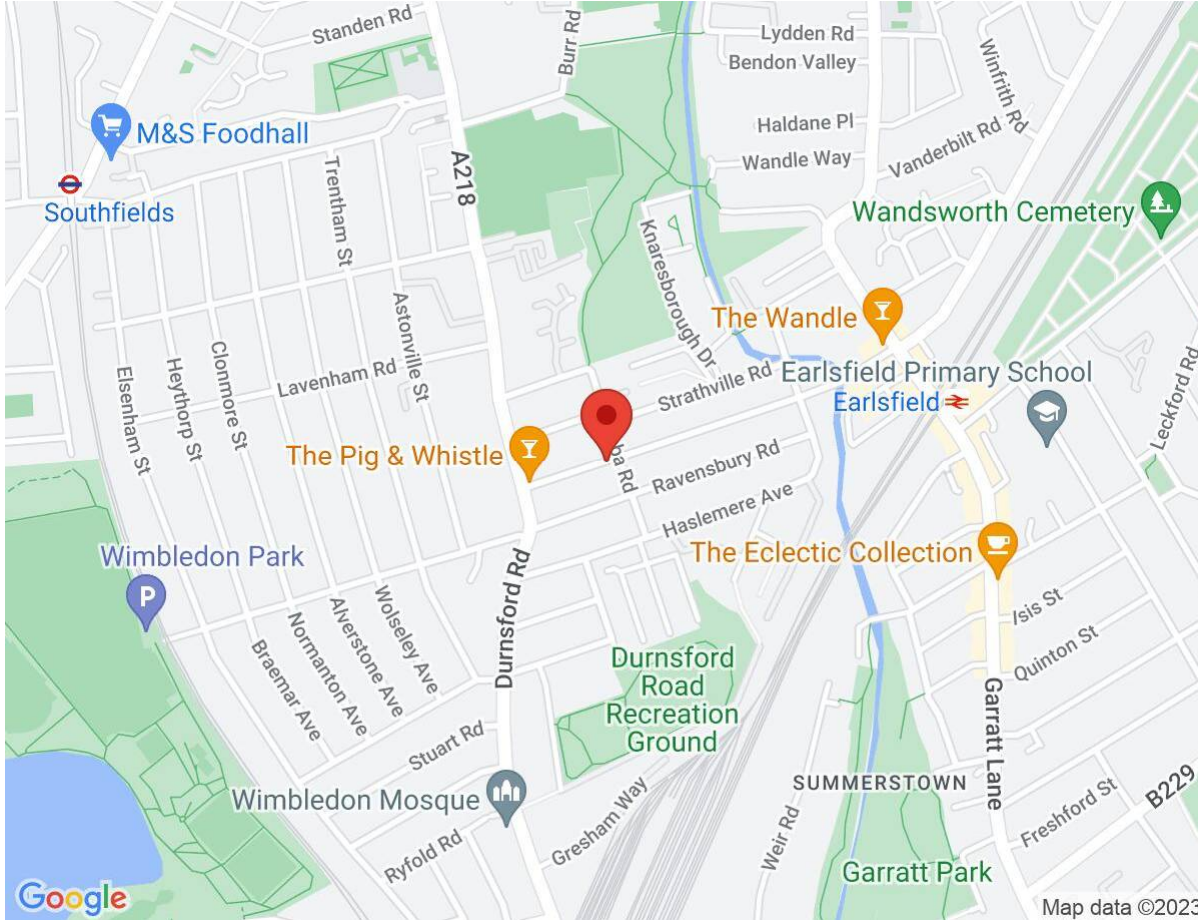
Seymour Green, 483 Merton Road, London SW18 5LE  
T: 020 8870 0111 F: 020 3302 9598 E: [southfields@seymour-green.co.uk](mailto:southfields@seymour-green.co.uk) W: [seymour-green.co.uk](http://seymour-green.co.uk)



**SEYMOURGREEN**  
AT THE HEART OF YOUR MOVE

# Penwith Road, Southfields, London, SW18

## To Let: £1,800 per month



**IMPORTANT NOTICE**  
Descriptions of the property are subjective and are used in good faith as an opinion and NOT as a statement of fact. Please make further specific enquires to ensure that our descriptions are likely to match any expectations you may have of the property. We have not tested any services, systems or appliances at this property. We strongly recommend that all the information we provide be verified by you on inspection, and by your Surveyor and Conveyancer.

Seymour Green, 483 Merton Road, London SW18 5LE  
T: 020 8870 0111 F: 020 3302 9598 E: southfields@seymour-green.co.uk W: seymour-green.co.uk