



SEYMOURGREEN
AT THE HEART ♥ OF YOUR MOVE

Earlsfield Road, Earlsfield, London, SW18

- ♥ Excellent Location
- ♥ Earlsfield Mainline Station
- ♥ Tastefully Furnished
- ♥ Off Street Parking
- ♥ Generous Double Bedroom
- ♥ Modern Bathroom

A superb ground floor flat perfectly located within walking distance to Garratt Lane and Earlsfield Mainline Station. This beautifully presented flat comprises a large living room, a generous double bedroom, fitted kitchen and modern bathroom, with wooden flooring throughout, stylish furniture, communal garden and off street parking this really would make an ideal home for a professional couple.

To Let: £1,850 per month



Seymour Green, 483 Merton Road, London SW18 5LE

T: 020 8870 0111 F: 020 3302 9598 E: southfields@seymour-green.co.uk W: seymour-green.co.uk



SEYMOURGREEN
AT THE HEART ♥ OF YOUR MOVE

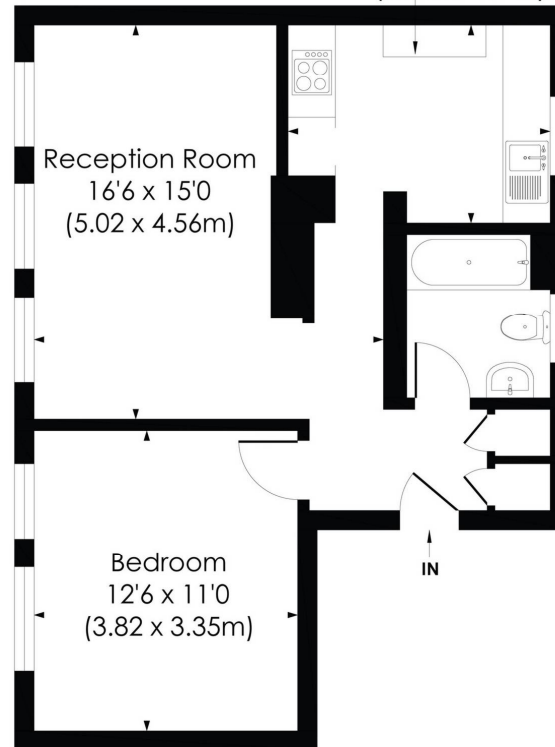
EARLSFIELD ROAD, SW18

Approx. Gross Internal Floor Area

526 Sq. ft/48.88 Sq. m



Kitchen
10'11 x 8'3
(3.33 x 2.52m)



GROUND FLOOR

© Pixangle Property Marketing Ltd. info@pixangle.com Tel: 0208 870 2118

pixangle
PROPERTY MARKETING

This floor plan has been prepared for the purpose of illustration only in accordance with the latest RICS code of measuring practice and is not to scale. All measurements and areas are approximate and whilst every effort has been made to ensure the accuracy of the plan contained here, no responsibility is taken for any error, omission or misstatement.



SEYMOURGREEN
AT THE HEART ♥ OF YOUR MOVE

Earlsfield Road, Earlsfield, London, SW18

To Let: £1,850 per month



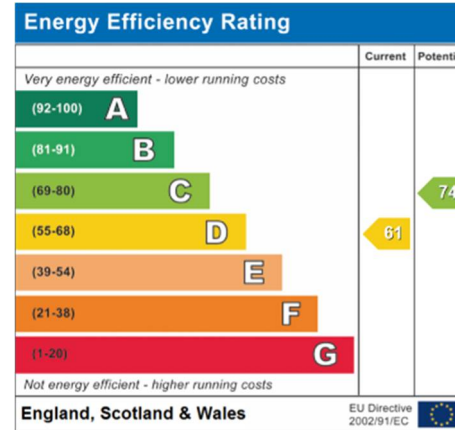
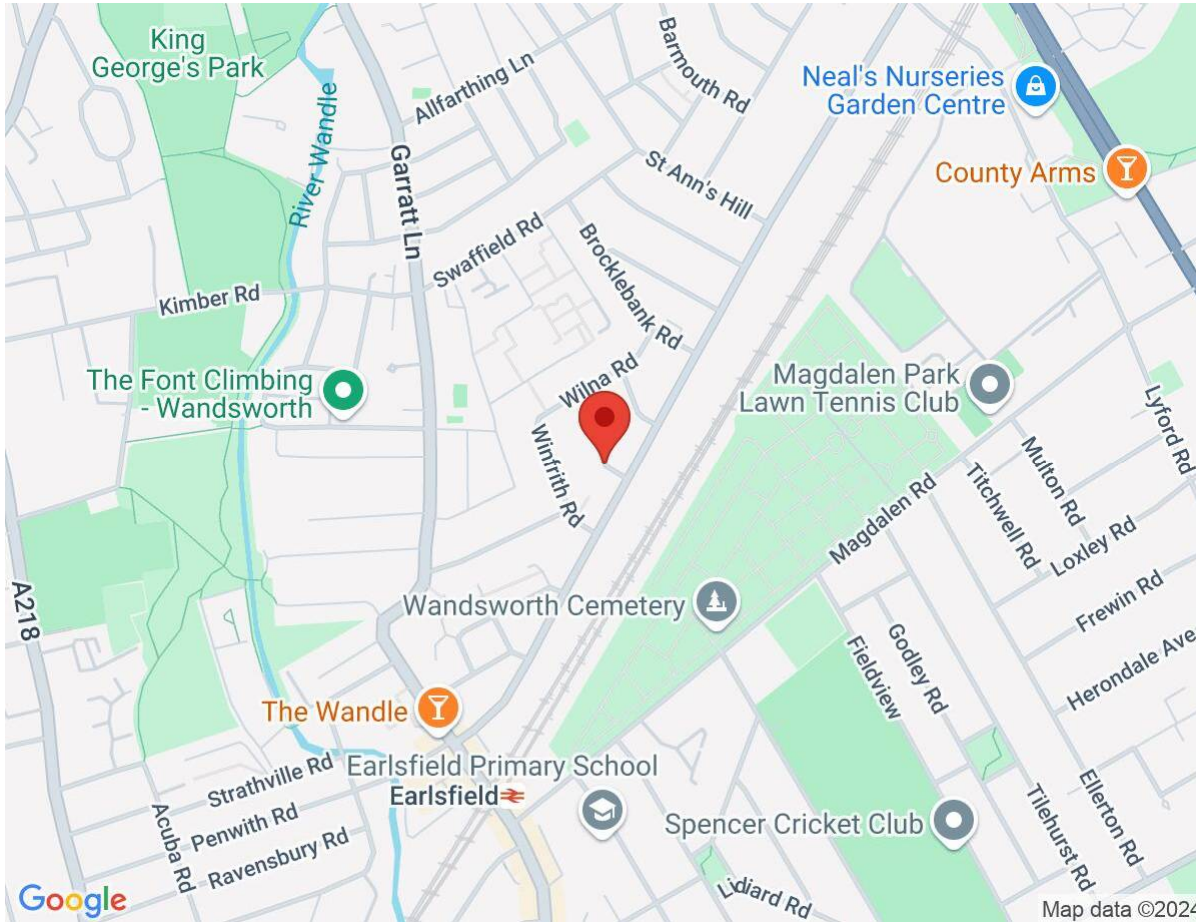
Seymour Green, 483 Merton Road, London SW18 5LE
T: 020 8870 0111 F: 020 3302 9598 E: southfields@seymour-green.co.uk W: seymour-green.co.uk



SEYMOURGREEN
AT THE HEART ♥ OF YOUR MOVE

Earlsfield Road, Earlsfield, London, SW18

To Let: £1,850 per month



IMPORTANT NOTICE
Descriptions of the property are subjective and are used in good faith as an opinion and NOT as a statement of fact. Please make further specific enquires to ensure that our descriptions are likely to match any expectations you may have of the property. We have not tested any services, systems or appliances at this property. We strongly recommend that all the information we provide be verified by you on inspection, and by your Surveyor and Conveyancer.

Seymour Green, 483 Merton Road, London SW18 5LE
T: 020 8870 0111 F: 020 3302 9598 E: southfields@seymour-green.co.uk W: seymour-green.co.uk