



**SEYMOURGREEN**  
AT THE HEART ♥ OF YOUR MOVE

## Thomas Hardy Mews, Streatham, London, SW16

- ♥ Gated Mews Development
- ♥ Available Immediately
- ♥ EPC B
- ♥ Secure Off Street Parking
- ♥ Streatham Common Station
- ♥ Open Plan Living

Thomas Hardy Mews is an exceptional gated mews development located off Thrales Road within the popular Furzedown area, just a 12 minute walk to Streatham Common Station. These newly constructed properties have been built to exacting standards, with high end kitchens and bathrooms, NUAIRE ventilation system and wood flooring in the living areas. A generous entrance lobby with guest cloakroom and storage, leads to the spacious open plan living area. On the upper floors are three double bedrooms and two bathrooms. Outside is a pretty patio garden ideal for summer entertaining, whilst the house comes with allocated off street parking for one car.

## To Let: £2,800 per month



Seymour Green, 483 Merton Road, London SW18 5LE

T: 020 8870 0111 F: 020 3302 9598 E: [southfields@seymour-green.co.uk](mailto:southfields@seymour-green.co.uk) W: [seymour-green.co.uk](http://seymour-green.co.uk)



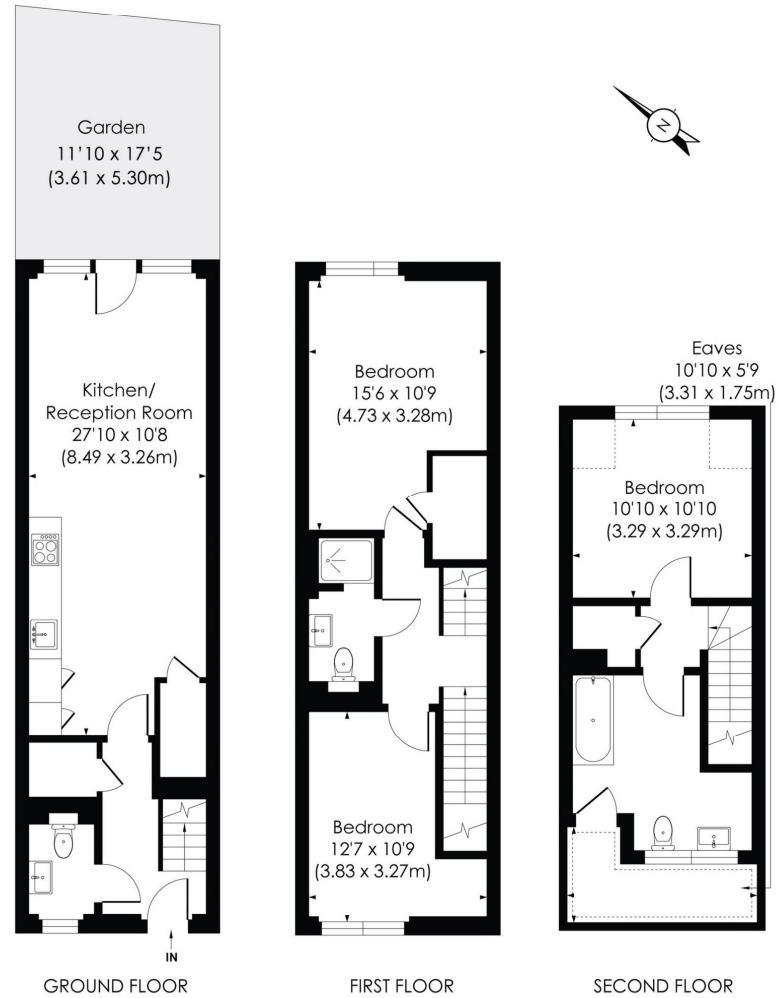
**SEYMOURGREEN**  
AT THE HEART ♥ OF YOUR MOVE

## THOMAS HARDY MEWS, SW16

Approx. Gross Internal Floor Area

**1146 Sq. ft/106.40 Sq. m (Incl. Eaves)**

**1102 Sq. ft/102.46 Sq. m (Excl. Eaves)**



© Pixangle Property Marketing Ltd. info@pixangle.com Tel: 0208 870 2118

**pixangle**  
PROPERTY MARKETING

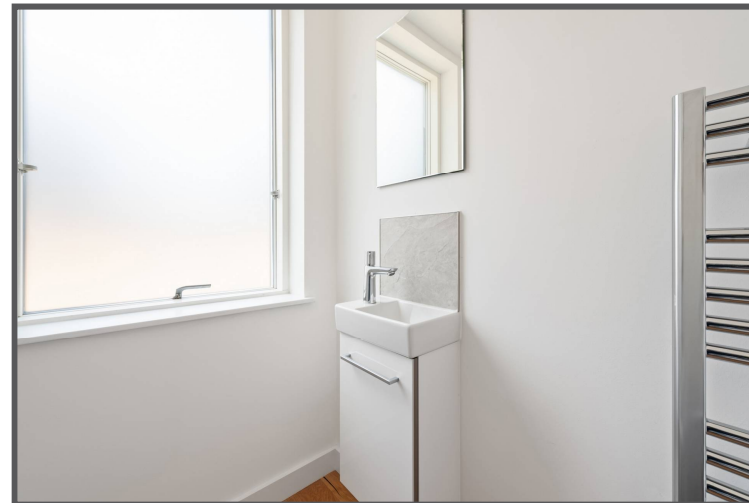
This floor plan has been prepared for the purpose of illustration only in accordance with the latest RICS code of measuring practice and is not to scale. All measurements and areas are approximate and whilst every effort has been made to ensure the accuracy of the plan contained here, no responsibility is taken for any error, omission or misstatement.



**SEYMOURGREEN**  
AT THE HEART ♥ OF YOUR MOVE

# Thomas Hardy Mews, Streatham, London, SW16

## To Let: £2,800 per month



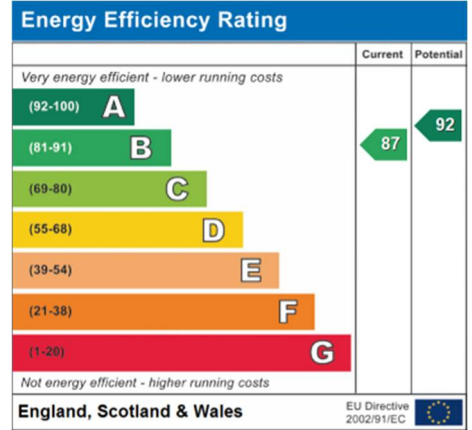
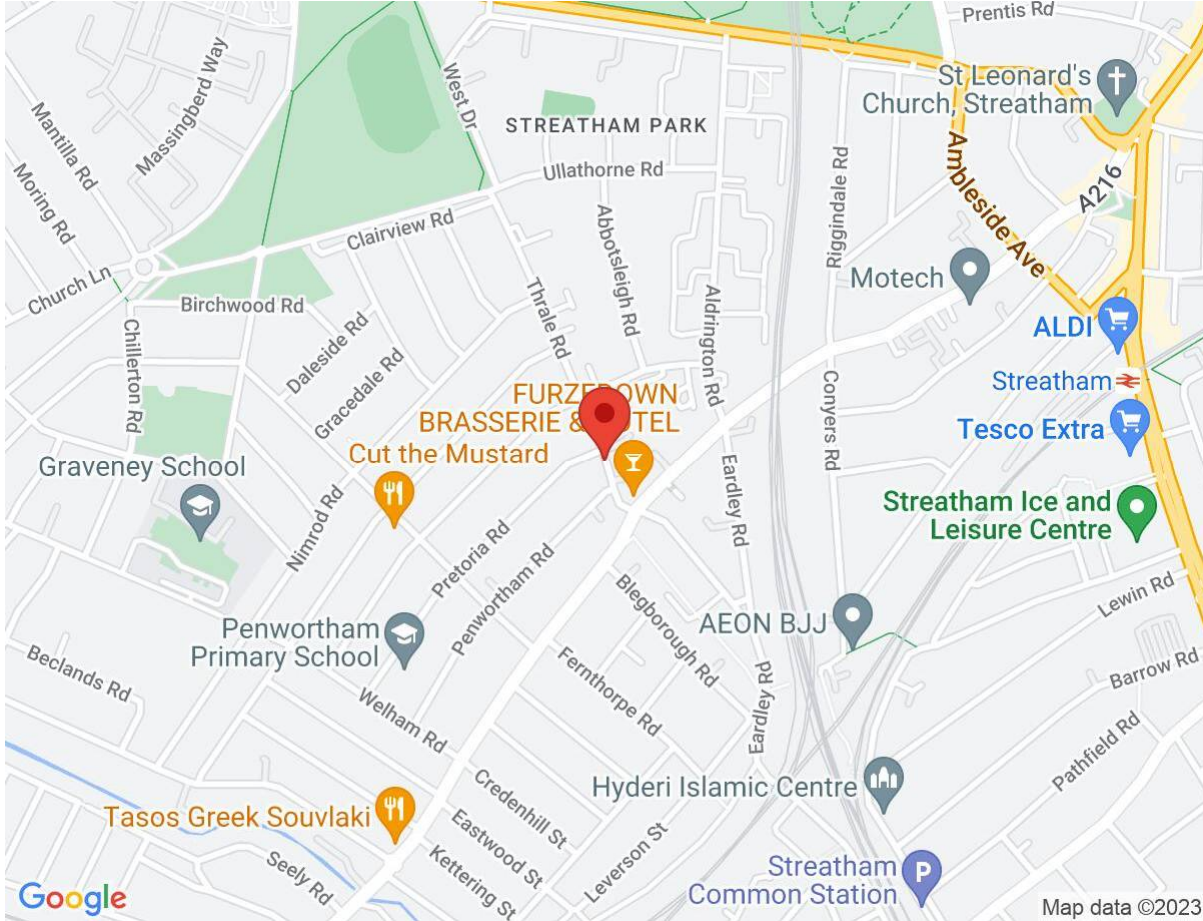
Seymour Green, 483 Merton Road, London SW18 5LE  
T: 020 8870 0111 F: 020 3302 9598 E: [southfields@seymour-green.co.uk](mailto:southfields@seymour-green.co.uk) W: [seymour-green.co.uk](http://seymour-green.co.uk)



**SEYMOURGREEN**  
AT THE HEART OF YOUR MOVE

# Thomas Hardy Mews, Streatham, London, SW16

## To Let: £2,800 per month



**IMPORTANT NOTICE**  
Descriptions of the property are subjective and are used in good faith as an opinion and NOT as a statement of fact. Please make further specific enquires to ensure that our descriptions are likely to match any expectations you may have of the property. We have not tested any services, systems or appliances at this property. We strongly recommend that all the information we provide be verified by you on inspection, and by your Surveyor and Conveyancer.

Seymour Green, 483 Merton Road, London SW18 5LE  
T: 020 8870 0111 F: 020 3302 9598 E: southfields@seymour-green.co.uk W: seymour-green.co.uk