



**SEYMOURGREEN**  
AT THE HEART ♥ OF YOUR MOVE

## Stormont House, East Putney, London, SW15

- ♥ Two Bed, Two Bath
- ♥ Open Plan Living
- ♥ Modern Development
- ♥ Unfurnished
- ♥ Great for Transport
- ♥ Available Immediately

Stunning raised ground floor apartment set within this fabulous development perfectly located for the excellent amenities of both Putney and Southfields. With 2 double bedrooms, 2 bathrooms one en-suite, spacious open plan living kitchen area with a south facing balcony and secure underground parking this wonderful flat would suit a small family or 2 professional sharers. The development boasts onsite gym and resident's library, whilst both East Putney and Southfields Tube Stations are within walking distance.

# To Let: £2,400 per month



Seymour Green, 483 Merton Road, London SW18 5LE

T: 020 8870 0111 F: 020 3302 9598 E: [southfields@seymour-green.co.uk](mailto:southfields@seymour-green.co.uk) W: [seymour-green.co.uk](http://seymour-green.co.uk)

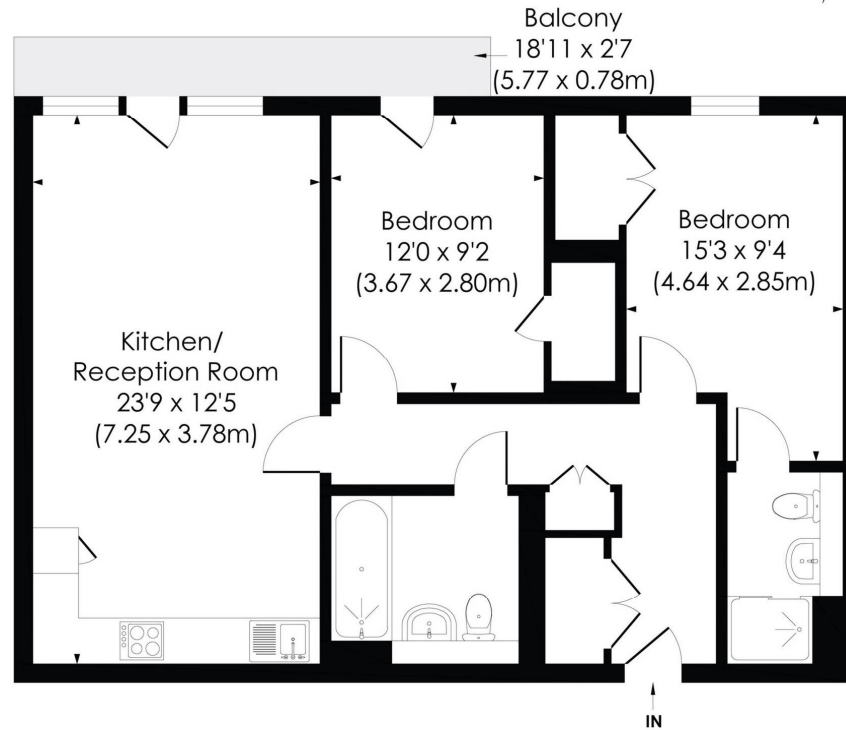


**SEYMOURGREEN**  
AT THE HEART ♥ OF YOUR MOVE

## SCOTT AVENUE, SW15

Approx. Gross Internal Floor Area

**825 Sq. ft/76.63 Sq. m**



RAISED GROUND FLOOR

© Pixangle Property Marketing Ltd. info@pixangle.com Tel: 0208 870 2118

**pixangle**  
PROPERTY MARKETING

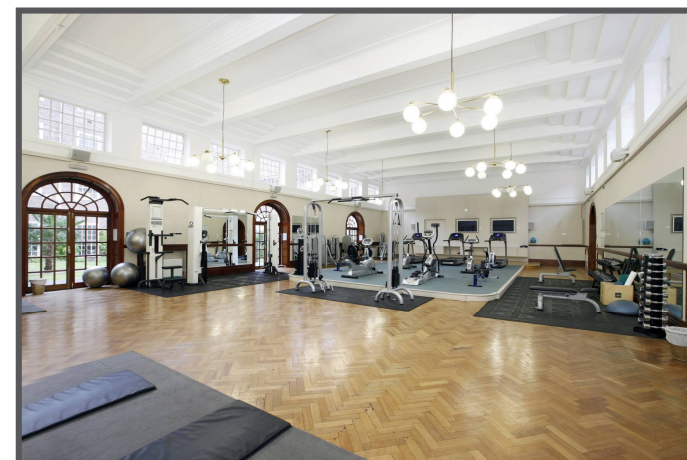
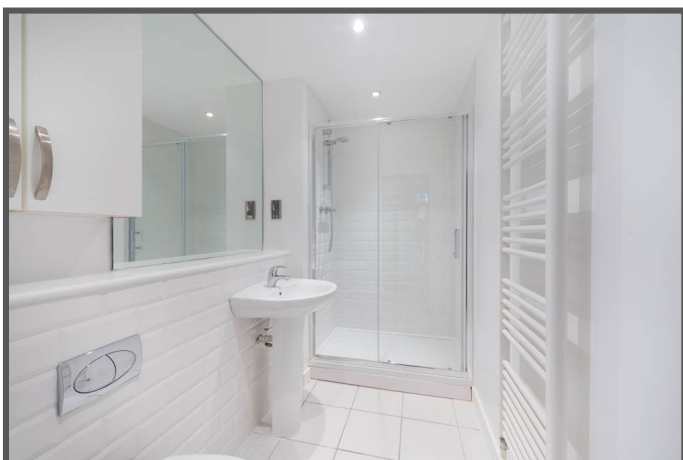
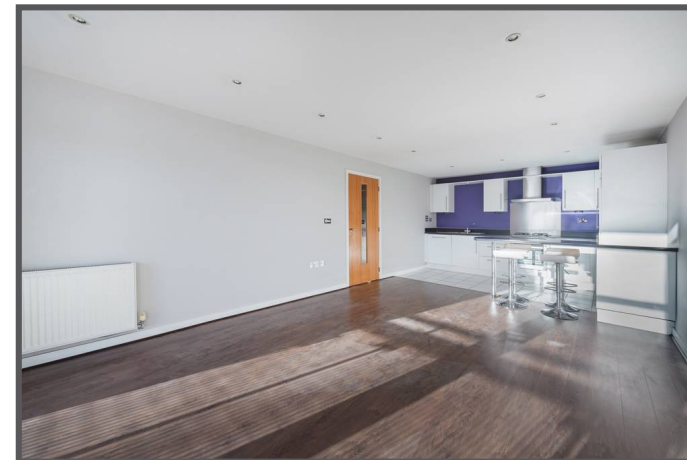
This floor plan has been prepared for the purpose of illustration only in accordance with the latest RICS code of measuring practice and is not to scale. All measurements and areas are approximate and whilst every effort has been made to ensure the accuracy of the plan contained here, no responsibility is taken for any error, omission or misstatement.



**SEYMOURGREEN**  
AT THE HEART ♥ OF YOUR MOVE

# Stormont House, East Putney, London, SW15

## To Let: £2,400 per month



Seymour Green, 483 Merton Road, London SW18 5LE  
T: 020 8870 0111 F: 020 3302 9598 E: [southfields@seymour-green.co.uk](mailto:southfields@seymour-green.co.uk) W: [seymour-green.co.uk](http://seymour-green.co.uk)

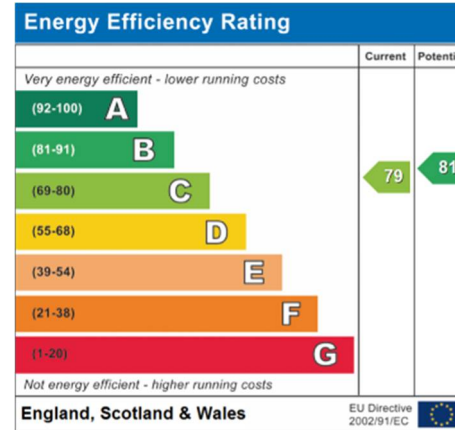




**SEYMOURGREEN**  
AT THE HEART ♥ OF YOUR MOVE

# Stormont House, East Putney, London, SW15

## To Let: £2,400 per month



**IMPORTANT NOTICE**  
Descriptions of the property are subjective and are used in good faith as an opinion and NOT as a statement of fact. Please make further specific enquires to ensure that our descriptions are likely to match any expectations you may have of the property. We have not tested any services, systems or appliances at this property. We strongly recommend that all the information we provide be verified by you on inspection, and by your Surveyor and Conveyancer.

Seymour Green, 483 Merton Road, London SW18 5LE  
T: 020 8870 0111 F: 020 3302 9598 E: southfields@seymour-green.co.uk W: seymour-green.co.uk