



**SEYMOURGREEN**  
AT THE HEART ♥ OF YOUR MOVE

## Haldon Road, East Putney, London, SW18

- ♥ Three Double Bedrooms
- ♥ Two Bathrooms
- ♥ Period Features
- ♥ East Putney Tube
- ♥ Lovely Living Room
- ♥ Furnished

Wonderful three bedroom two bathroom flat over two floors of this impressive period building ideally located for East Putney Tube Station along with the excellent amenities of Southfields Village and Wandsworth High Street. The property retains many period features and comprises on the first floor a spacious living room with lovely square bay window, fireplace and built in alcove cupboards, a fully fitted kitchen, two double bedrooms and large bathroom, whilst the top floor boasts the generous master bedroom along with modern en-suite shower room and access to the excellent under eaves storage.

# To Let: £2,950 per month



Seymour Green, 483 Merton Road, London SW18 5LE

T: 020 8870 0111 F: 020 3302 9598 E: [southfields@seymour-green.co.uk](mailto:southfields@seymour-green.co.uk) W: [seymour-green.co.uk](http://seymour-green.co.uk)



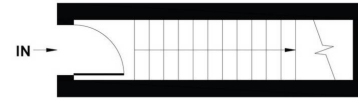
**SEYMOURGREEN**  
AT THE HEART ♥ OF YOUR MOVE

## HALDON ROAD, SW18

Approx. Gross Internal Floor Area

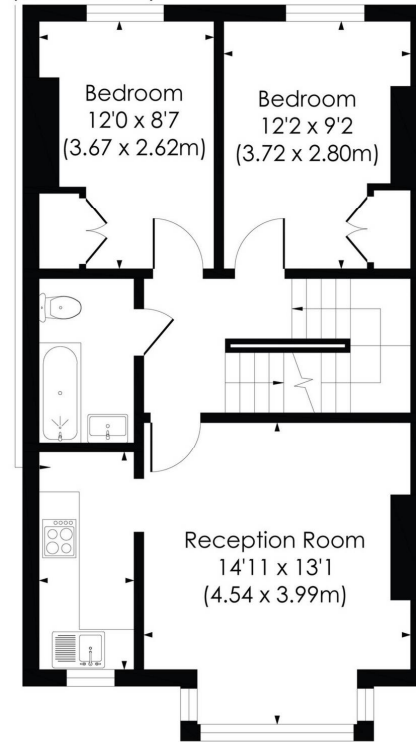
1221 Sq. ft/113.42 Sq. m (Including Reduced Height)

895 Sq. ft/83.19 Sq. m (Excluding Reduced Height)

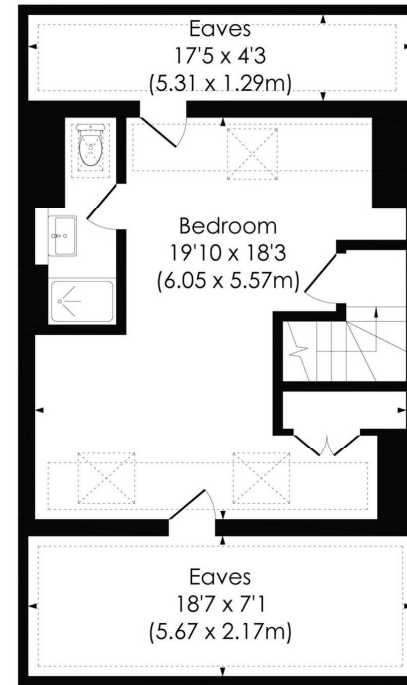


GROUND FLOOR

Kitchen  
10'10 x 4'10  
(3.29 x 1.48m)



FIRST FLOOR



SECOND FLOOR





**SEYMOURGREEN**  
AT THE HEART ♥ OF YOUR MOVE

# Haldon Road, East Putney, London, SW18

## To Let: £2,950 per month



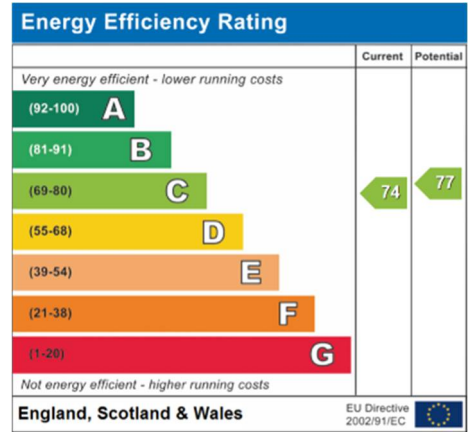
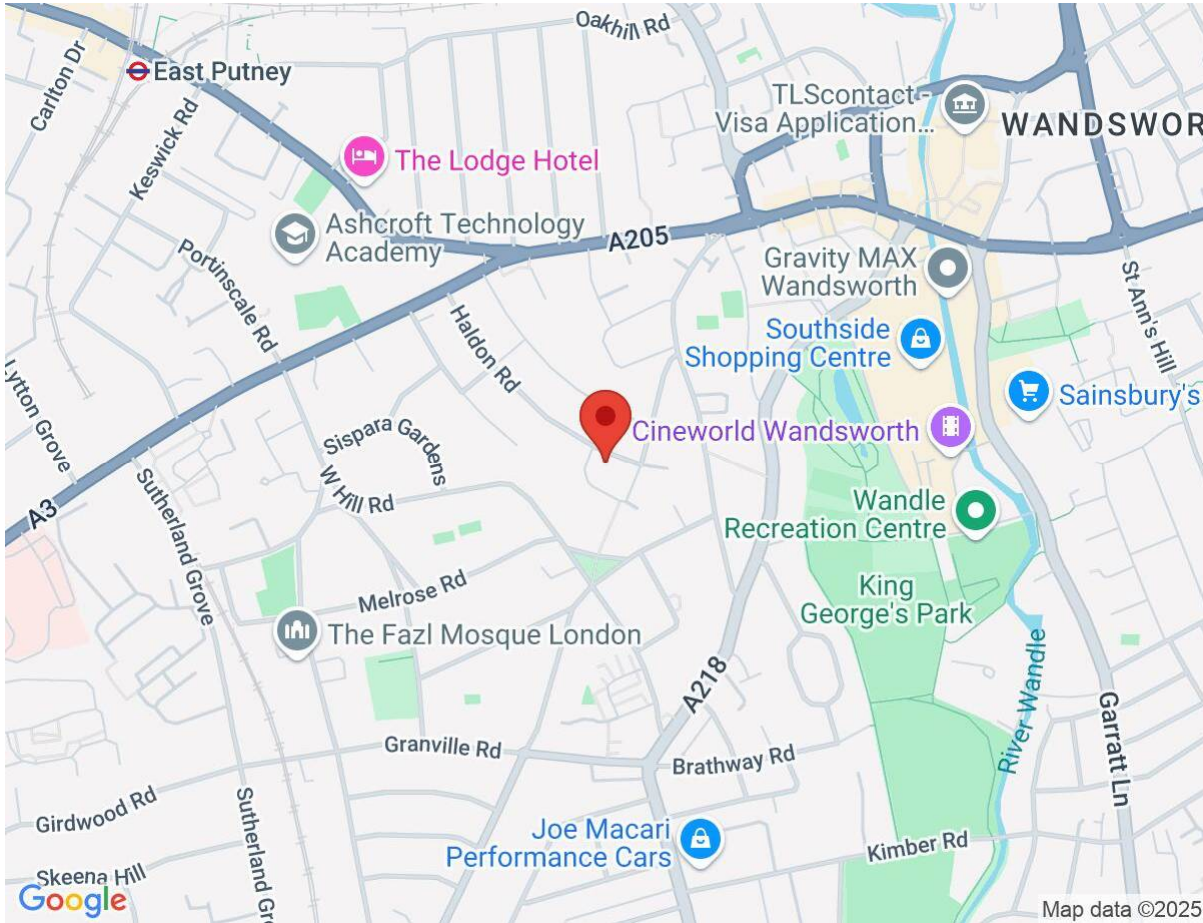
Seymour Green, 483 Merton Road, London SW18 5LE  
T: 020 8870 0111 F: 020 3302 9598 E: [southfields@seymour-green.co.uk](mailto:southfields@seymour-green.co.uk) W: [seymour-green.co.uk](http://seymour-green.co.uk)



SEYMOURGREEN  
AT THE HEART OF YOUR MOVE

# Haldon Road, East Putney, London, SW18

## To Let: £2,950 per month



**IMPORTANT NOTICE**  
Descriptions of the property are subjective and are used in good faith as an opinion and NOT as a statement of fact. Please make further specific enquires to ensure that our descriptions are likely to match any expectations you may have of the property. We have not tested any services, systems or appliances at this property. We strongly recommend that all the information we provide be verified by you on inspection, and by your Surveyor and Conveyancer.

Seymour Green, 483 Merton Road, London SW18 5LE  
T: 020 8870 0111 F: 020 3302 9598 E: southfields@seymour-green.co.uk W: seymour-green.co.uk