



**SEYMOURGREEN**  
AT THE HEART ♥ OF YOUR MOVE

## Brookwood Road, Southfields, London, SW18

- ♥ Double Aspect Living Room
- ♥ Good Order Throughout
- ♥ First Floor Flat
- ♥ Own Front Door
- ♥ Bright and Spacious
- ♥ Private Rear Garden

LARGER than average maisonette with own front door, PRIVATE GARDEN and excellent living space, being just 6-7 minutes from Southfields Tube and the good selection of local shops and cafes of Southfields Village. This very well presented extremely spacious flat comprises a double aspect reception room, good size double bedroom, eat in kitchen, bathroom with modern suite, separate cloakroom, utility room and handy small office area. The property further benefits from its own front door, 40' private rear garden with a very useful 12' brick storage shed.

# To Let: £1,850 per month

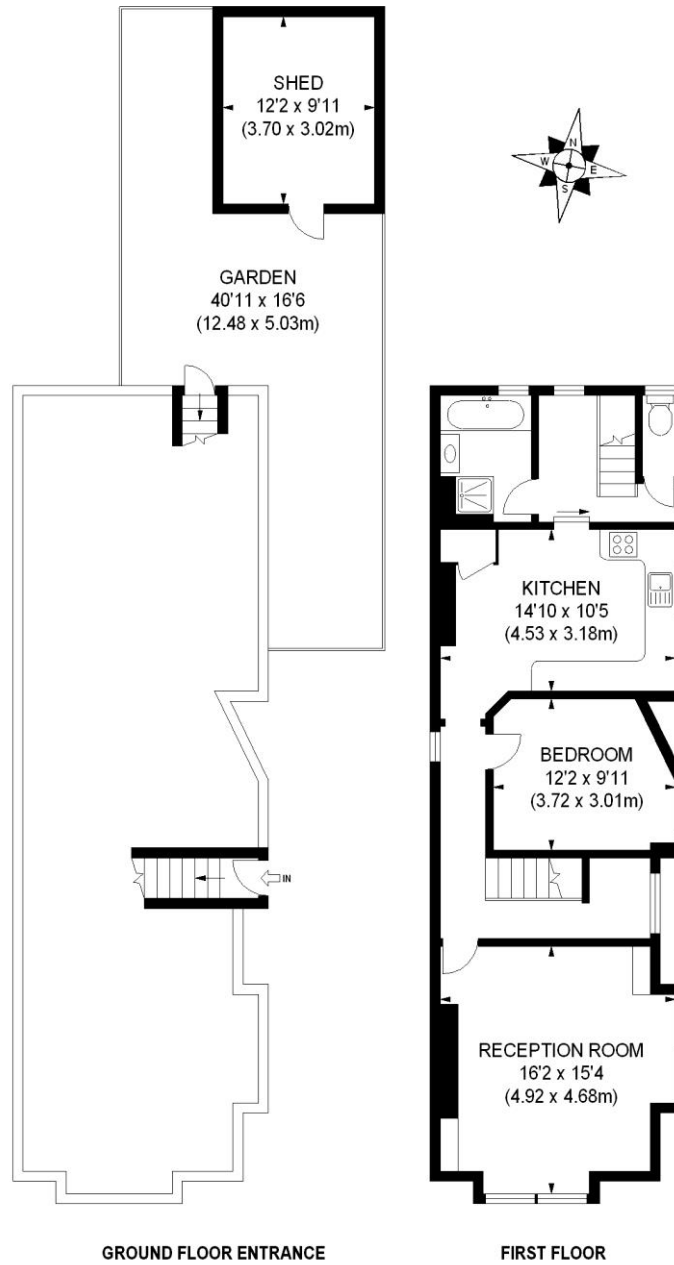


Seymour Green, 483 Merton Road, London SW18 5LE

T: 020 8870 0111 F: 020 3302 9598 E: [southfields@seymour-green.co.uk](mailto:southfields@seymour-green.co.uk) W: [seymour-green.co.uk](http://seymour-green.co.uk)



**SEYMOURGREEN**  
AT THE HEART ♥ OF YOUR MOVE



APPROX. GROSS INTERNAL FLOOR AREA 774 SQ FT / 71.90 SQ M

Illustration for identification purposes only, not to scale  
All measurements are maximum, and includes wardrobes and window bays where applicable  
Prepared by Pixangle © . Tel 020 8870 2118



**SEYMOURGREEN**  
AT THE HEART ♥ OF YOUR MOVE

# Brookwood Road, Southfields, London, SW18

## To Let: £1,850 per month



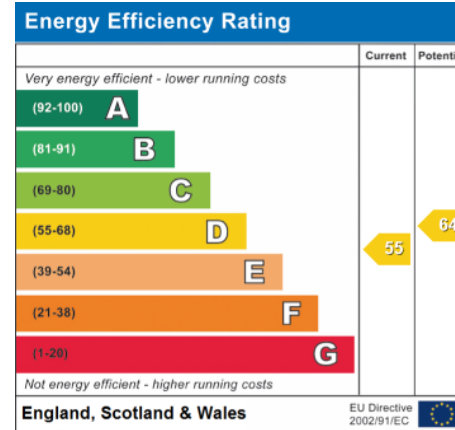
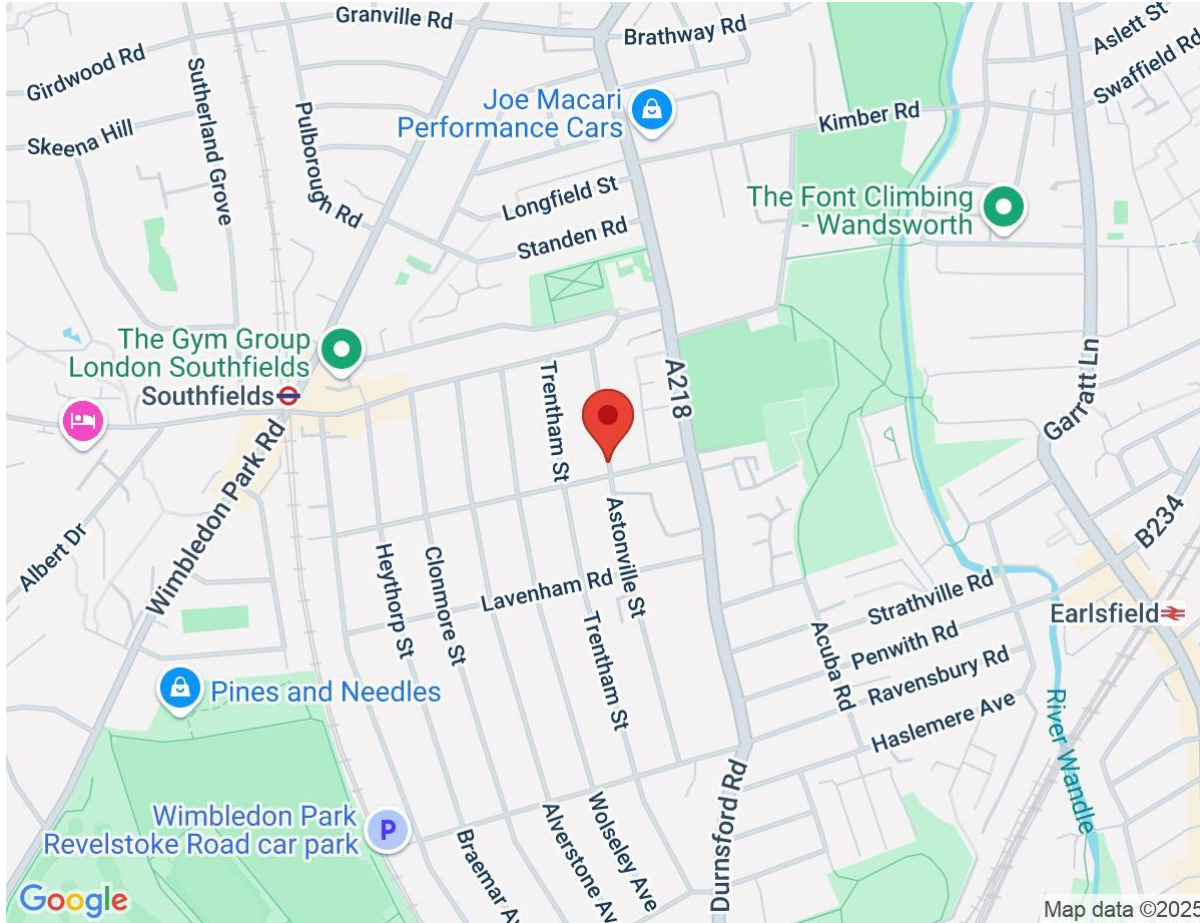
Seymour Green, 483 Merton Road, London SW18 5LE  
T: 020 8870 0111 F: 020 3302 9598 E: [southfields@seymour-green.co.uk](mailto:southfields@seymour-green.co.uk) W: [seymour-green.co.uk](http://seymour-green.co.uk)



**SEYMOURGREEN**  
AT THE HEART ♥ OF YOUR MOVE

# Brookwood Road, Southfields, London, SW18

## To Let: £1,850 per month



**IMPORTANT NOTICE**  
Descriptions of the property are subjective and are used in good faith as an opinion and NOT as a statement of fact. Please make further specific enquires to ensure that our descriptions are likely to match any expectations you may have of the property. We have not tested any services, systems or appliances at this property. We strongly recommend that all the information we provide be verified by you on inspection, and by your Surveyor and Conveyancer.

Seymour Green, 483 Merton Road, London SW18 5LE  
T: 020 8870 0111 F: 020 3302 9598 E: southfields@seymour-green.co.uk W: seymour-green.co.uk