



SEYMOURGREEN

AT THE HEART ♥ OF YOUR MOVE

Wimbledon Park Road, Wimbledon, London, SW19

- ♥ No Onward Chain
- ♥ Double Aspect Living Space
- ♥ Stunning Penthouse
- ♥ Rare Opportunity
- ♥ Far Reaching Views
- ♥ Balcony and Roof Terrace

A stunning 6th and 7th floor penthouse flat within Lakeview Court offering an exceptional living experience with its spacious double aspect layout and stunning views. Spanning two floors, this 4-bedroom, 2-bathroom residence boasts approximately 1,667 sq. ft. (154.90 sq. m) of living space. The property features a beautifully appointed living area and dining space, enhanced by large windows that frame breath taking views over Wimbledon Park and beyond. A private balcony from the living room provides an ideal spot to enjoy the scenery along with the top floor large roof terrace. The fully fitted kitchen and well-designed bathrooms, including a stylish en-suite, add to the home's appeal. Additional amenities include ample storage and access to a garage. Conveniently located near both All England Lawn Tennis Club and Wimbledon Village.

For Sale: £1,250,000



Seymour Green, 483 Merton Road, London SW18 5LE

T: 020 8870 0111 F: 020 3302 9598 E: southfields@seymour-green.co.uk W: seymour-green.co.uk



SEYMOURGREEN

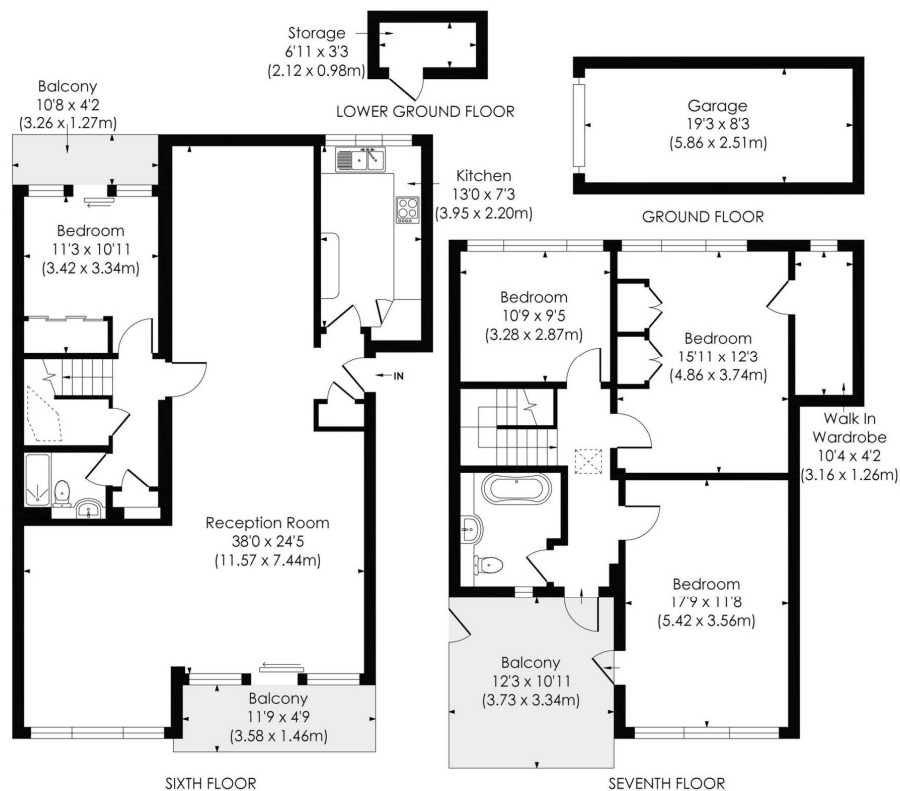
AT THE HEART  OF YOUR MOVE

WIMBLEDON PARK ROAD, SW19

Approx. Gross Internal Floor Area

1848 Sq. ft/171.69 Sq. m (Including Garage and Store)

1667 Sq. ft/154.90 Sq. m (Excluding Garage and Store)



© Pixangle Property Marketing Ltd. info@pixangle.com Tel: 0208 870 2118

pixangle
PROPERTY MARKETING

This floor plan has been prepared for the purpose of illustration only in accordance with the latest RICS code of measuring practice and is not to scale. All measurements and areas are approximate and whilst every effort has been made to ensure the accuracy of the plan contained here, no responsibility is taken for any error, omission or misstatement.

Wimbledon Park Road, Wimbledon, London, SW19

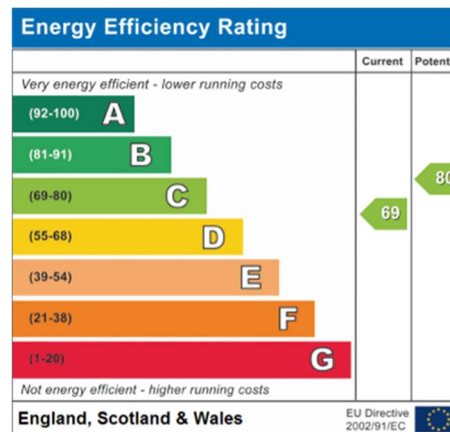
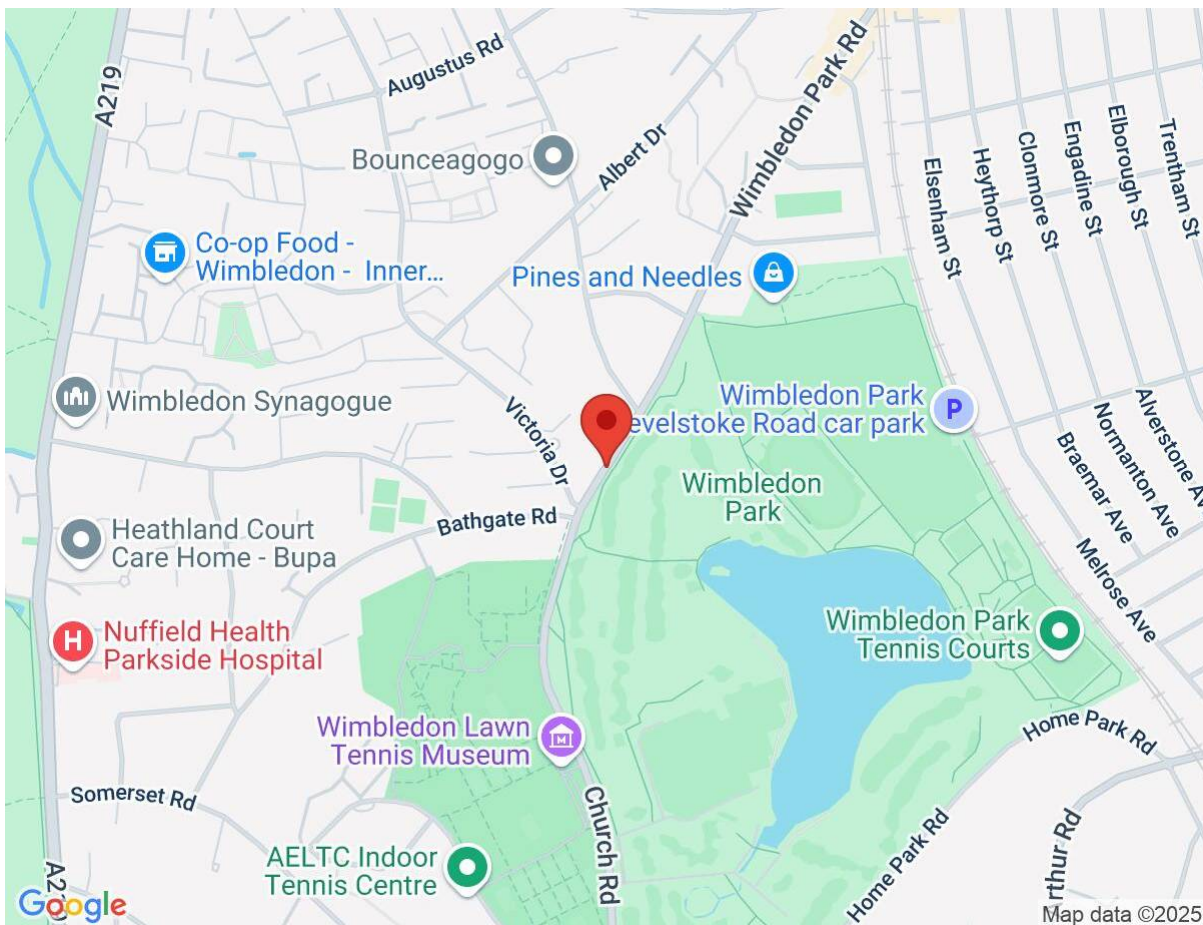
For Sale: £1,250,000



Seymour Green, 483 Merton Road, London SW18 5LE
T: 020 8870 0111 F: 020 3302 9598 E: southfields@seymour-green.co.uk W: seymour-green.co.uk

Wimbledon Park Road, Wimbledon, London, SW19

For Sale: £1,250,000



IMPORTANT NOTICE
Descriptions of the property are subjective and are used in good faith as an opinion and NOT as a statement of fact. Please make further specific enquires to ensure that our descriptions are likely to match any expectations you may have of the property. We have not tested any services, systems or appliances at this property. We strongly recommend that all the information we provide be verified by you on inspection, and by your Surveyor and Conveyancer.

Seymour Green, 483 Merton Road, London SW18 5LE
T: 020 8870 0111 F: 020 3302 9598 E: southfields@seymour-green.co.uk W: seymour-green.co.uk