



SEYMOURGREEN

AT THE HEART ♥ OF YOUR MOVE

Erpingham Road, Putney, London, SW15

- ♥ Three Double Bedrooms
- ♥ Well Located for Transport
- ♥ Kitchen Breakfast Room
- ♥ Large Living Room
- ♥ 1220 Square Feet Over Two Floors
- ♥ Private Entrance

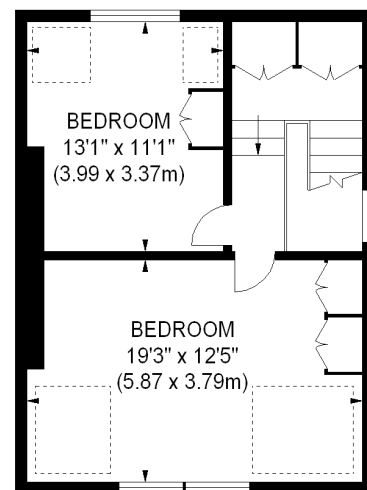
With 1220 sq feet of accommodation spread over two floors this spacious and well-presented maisonette comprises a large living room, three genuine double bedrooms, kitchen breakfast room, bathroom with modern suite and guest cloakroom. The property also benefits from its own front door and is part furnished. Erpingham Road is a delightful residential road which benefits from close proximity to a number of highly sought after schools, a wide range of transport links, the wide open spaces of Putney Common and the good selection of shops, bars and restaurants found on the Lower Richmond Road.

To Let: £3,250 per month

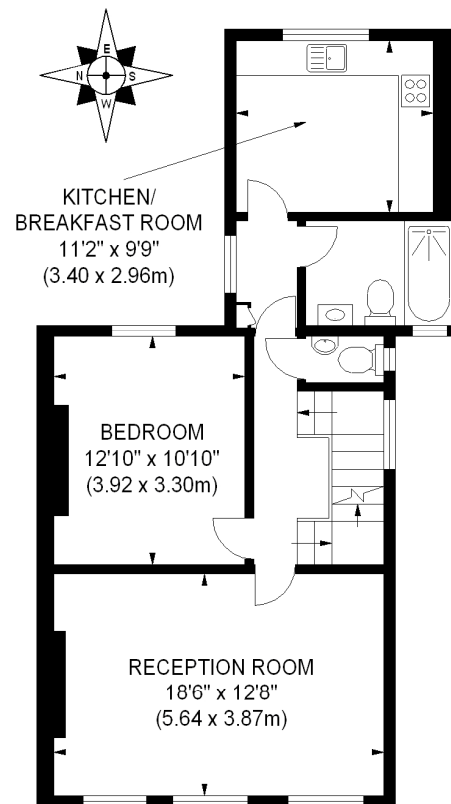


Seymour Green, 483 Merton Road, London SW18 5LE

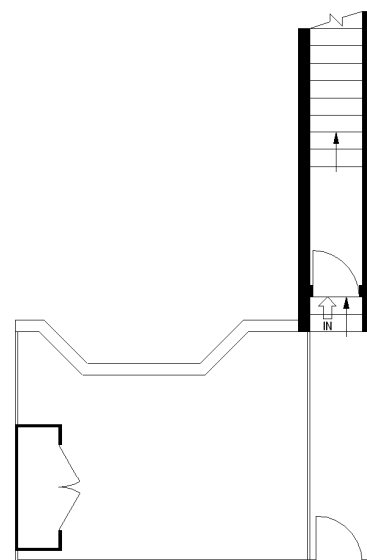
T: 020 8870 0111 F: 020 3302 9598 E: southfields@seymour-green.co.uk W: seymour-green.co.uk



SECOND FLOOR



FIRST FLOOR



GROUND FLOOR ENTRANCE

APPROX. GROSS INTERNAL FLOOR AREA 1220 SQ FT / 113 SQ M

Illustration for identification purposes only, not to scale
All measurements are maximum, and includes wardrobes and window bays where applicable
Prepared by Pixangle © . Tel 020 8870 2118

Erpingham Road, Putney, London, SW15

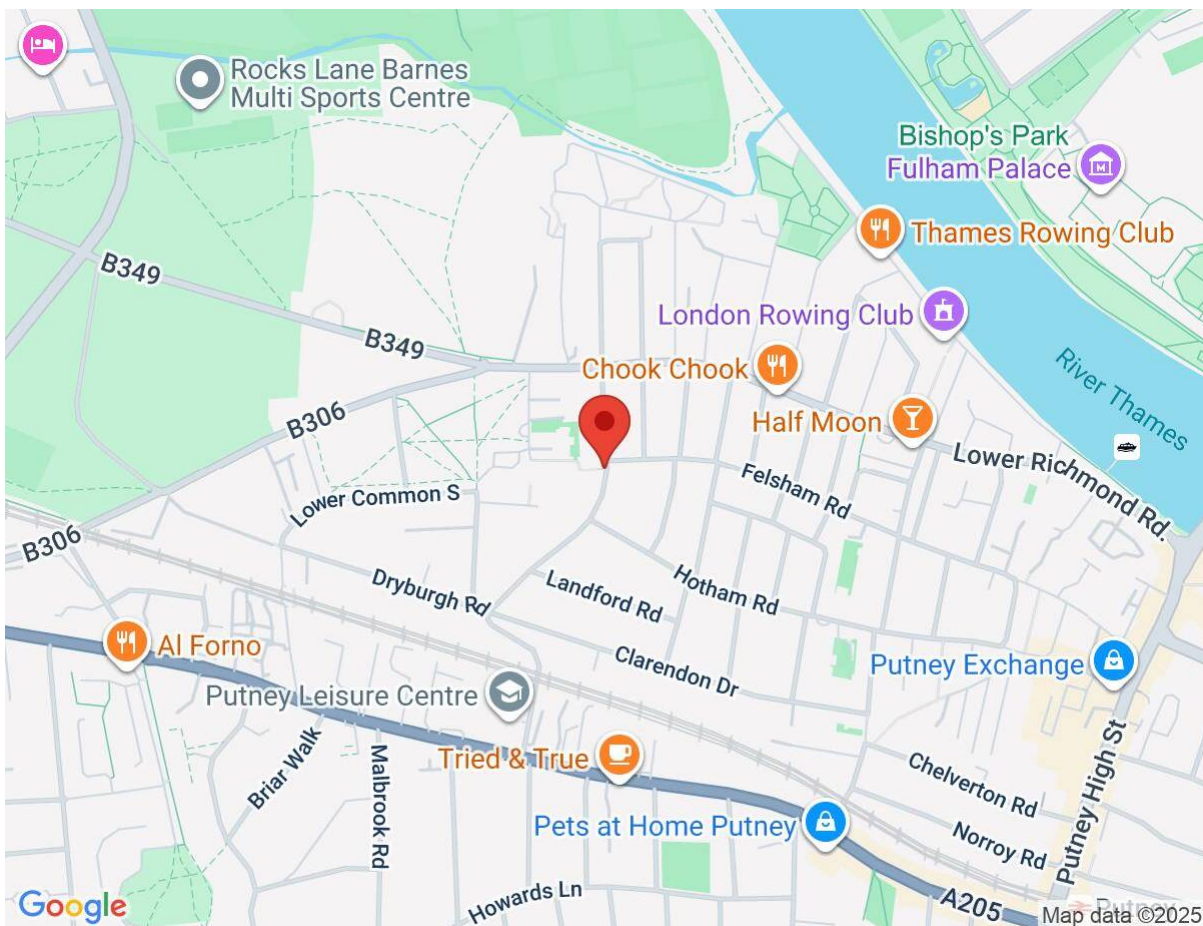
To Let: £3,250 per month



Seymour Green, 483 Merton Road, London SW18 5LE
T: 020 8870 0111 F: 020 3302 9598 E: southfields@seymour-green.co.uk W: seymour-green.co.uk

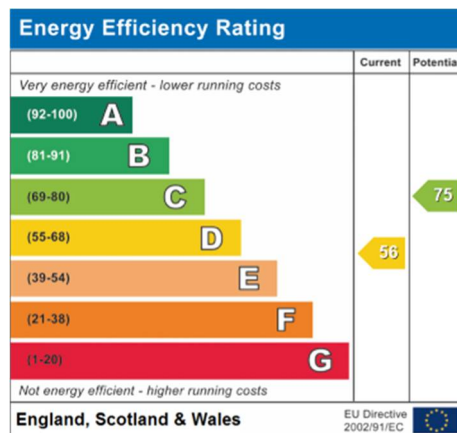
Erpingham Road, Putney, London, SW15

To Let: £3,250 per month



IMPORTANT NOTICE

Descriptions of the property are subjective and are used in good faith as an opinion and NOT as a statement of fact. Please make further specific enquires to ensure that our descriptions are likely to match any expectations you may have of the property. We have not tested any services, systems or appliances at this property. We strongly recommend that all the information we provide be verified by you on inspection, and by your Surveyor and Conveyancer.



Seymour Green, 483 Merton Road, London SW18 5LE

T: 020 8870 0111 F: 020 3302 9598 E: southfields@seymour-green.co.uk W: seymour-green.co.uk