



**SEYMOURGREEN**  
AT THE HEART ♥ OF YOUR MOVE

## Earlsfield Road, Earlsfield, London, SW18

- ♥ Spacious Ground Floor Flat
- ♥ Superb Kitchen Breakfast Room
- ♥ Earlsfield Mainline
- ♥ No Onward Chain
- ♥ Private Rear Garden
- ♥ Two Double Bedrooms

Perfectly located for EARLSFIELD MAINLINE STATION along with the wide range of amenities on GARRATT LANE this delightful garden flat is being sold with No Onward Chain and Share of Freehold. The spacious accommodation comprises TWO DOUBLE BEDROOMS, nursery/study, EAT IN KITCHEN, generous living room and modern bathroom, all complimented by the near 20ft rear garden.

# For Sale:

# O.I.E.O £500,000



Seymour Green, 483 Merton Road, London SW18 5LE

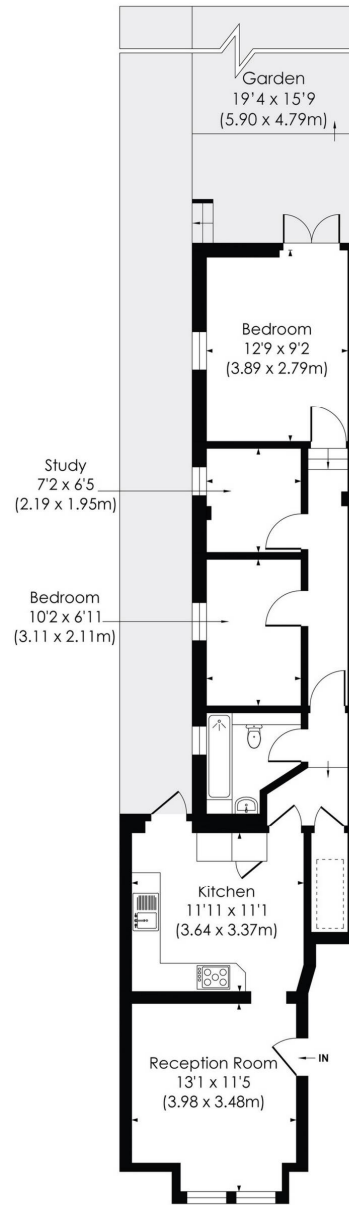
T: 020 8870 0111 F: 020 3302 9598 E: [southfields@seymour-green.co.uk](mailto:southfields@seymour-green.co.uk) W: [seymour-green.co.uk](http://seymour-green.co.uk)



**SEYMOURGREEN**  
AT THE HEART ♥ OF YOUR MOVE

## EARLSFIELD ROAD, SW18

Approx. Gross Internal Floor Area  
**673 Sq. ft/62.55 Sq. m**



### GROUND FLOOR

© Pixangle Property Marketing Ltd. info@pixangle.com Tel: 0208 870 2118

**pixangle**  
PROPERTY MARKETING

This floor plan has been prepared for the purpose of illustration only in accordance with the latest RICS code of measuring practice and is not to scale. All measurements and areas are approximate and whilst every effort has been made to ensure the accuracy of the plan contained here, no responsibility is taken for any error, omission or misstatement.



**SEYMOURGREEN**  
AT THE HEART ♥ OF YOUR MOVE

# Earlsfield Road, Earlsfield, London, SW18

## For Sale: O.I.E.O £500,000



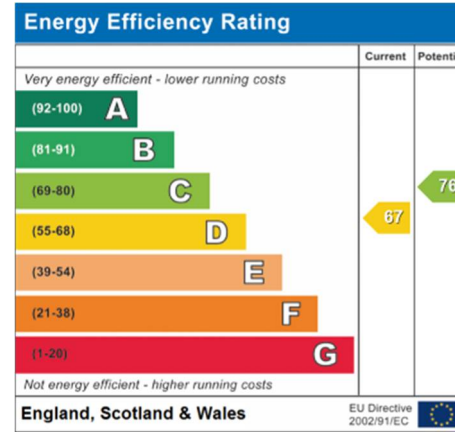
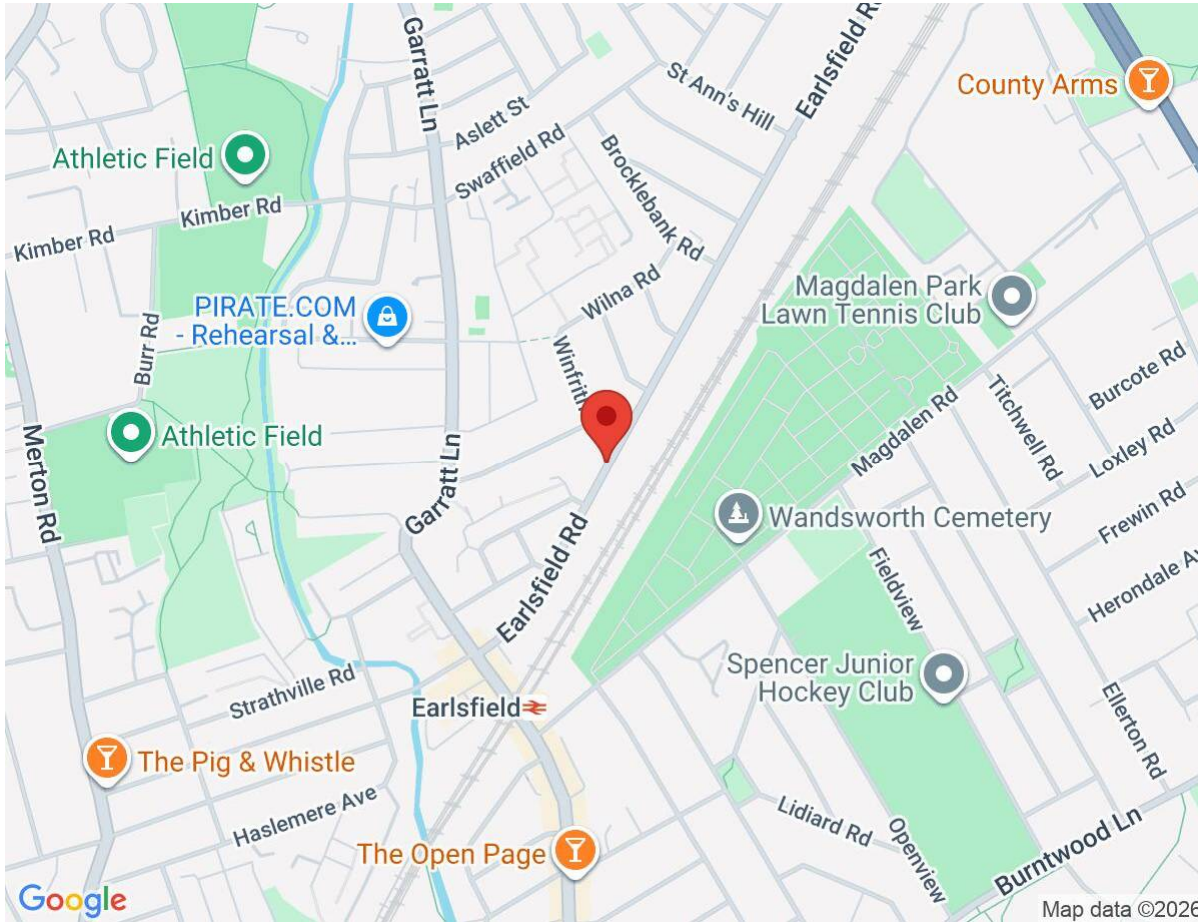
Seymour Green, 483 Merton Road, London SW18 5LE  
T: 020 8870 0111 F: 020 3302 9598 E: [southfields@seymour-green.co.uk](mailto:southfields@seymour-green.co.uk) W: [seymour-green.co.uk](http://seymour-green.co.uk)



SEYMOURGREEN  
AT THE HEART OF YOUR MOVE

# Earlsfield Road, Earlsfield, London, SW18

## For Sale: O.I.E.O £500,000



**IMPORTANT NOTICE**  
Descriptions of the property are subjective and are used in good faith as an opinion and NOT as a statement of fact. Please make further specific enquires to ensure that our descriptions are likely to match any expectations you may have of the property. We have not tested any services, systems or appliances at this property. We strongly recommend that all the information we provide be verified by you on inspection, and by your Surveyor and Conveyancer.

Seymour Green, 483 Merton Road, London SW18 5LE  
T: 020 8870 0111 F: 020 3302 9598 E: southfields@seymour-green.co.uk W: seymour-green.co.uk