



**SEYMOURGREEN**  
AT THE HEART ♥ OF YOUR MOVE

## Lavender Sweep, Battersea, London, SW11

- ♥ No Onward Chain
- ♥ Two Double Bedrooms
- ♥ Share of Freehold
- ♥ Sought After Location
- ♥ Excellent Condition
- ♥ Clapham Junction Mainline

Perfectly located on this highly desirable road just moments from Clapham Junction Mainline along with the wide open spaces of Clapham Common, this stunning flat of 919 Sq. feet has well balanced accommodation over two floors of this period mid terrace property. On the first floor you'll find the delightful and spacious reception room with fireplace wood floors and new double glazed windows, along with the well fitted kitchen breakfast room and guest cloakroom. Whilst the top floor boasts two spacious double bedrooms one with en-suite bathroom and a further bathroom. The property is in excellent condition throughout, is being sold with no onward chain and a share of the freehold.

# For Sale: £795,000



Seymour Green, 483 Merton Road, London SW18 5LE

T: 020 8870 0111 F: 020 3302 9598 E: [southfields@seymour-green.co.uk](mailto:southfields@seymour-green.co.uk) W: [seymour-green.co.uk](http://seymour-green.co.uk)

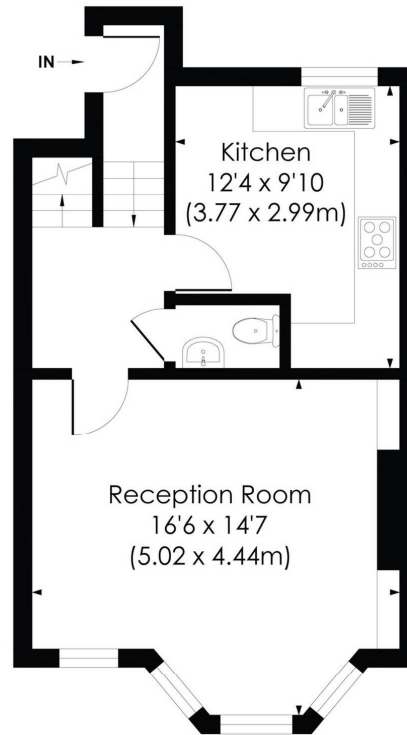


**SEYMOURGREEN**  
AT THE HEART  OF YOUR MOVE

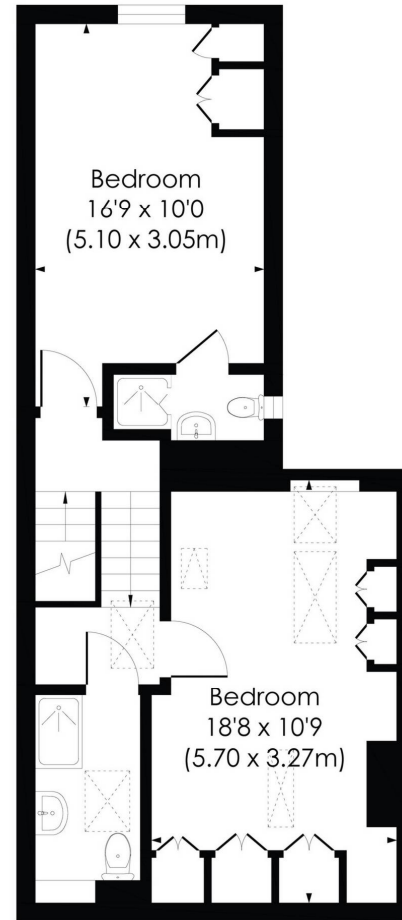
## LAVENDER SWEEP, SW11

Approx. Gross Internal Floor Area

**919 Sq. ft/85.35 Sq. m**



FIRST FLOOR



SECOND FLOOR

**pixangle**  
PROPERTY MARKETING

This floor plan has been prepared for the purpose of illustration only in accordance with the latest RICS code of measuring practice and is not to scale. All measurements and areas are approximate and whilst every effort has been made to ensure the accuracy of the plan contained here, no responsibility is taken for any error, omission or misstatement.

© Pixangle Property Marketing Ltd. info@pixangle.com Tel: 0208 870 2118



**SEYMOURGREEN**  
AT THE HEART ♥ OF YOUR MOVE

# Lavender Sweep, Battersea, London, SW11

## For Sale: £795,000



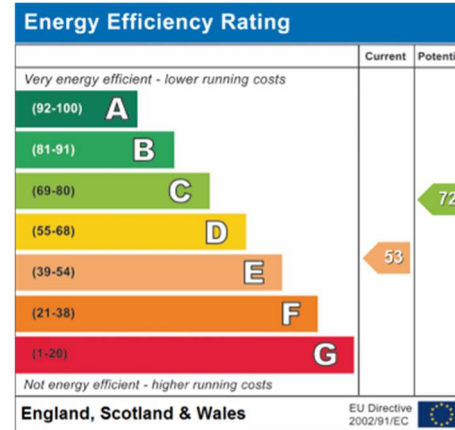
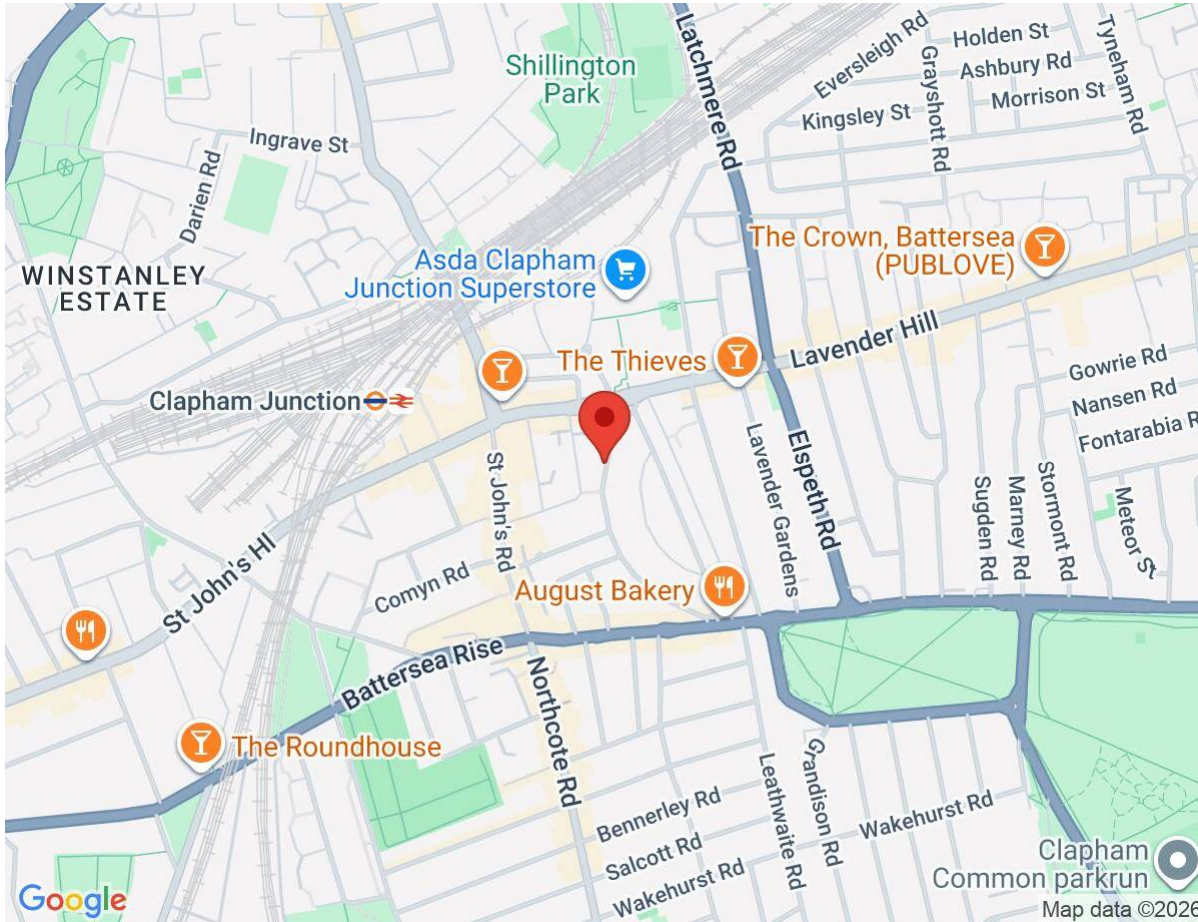
Seymour Green, 483 Merton Road, London SW18 5LE  
T: 020 8870 0111 F: 020 3302 9598 E: southfields@seymour-green.co.uk W: seymour-green.co.uk



**SEYMOURGREEN**  
AT THE HEART ♥ OF YOUR MOVE

# Lavender Sweep, Battersea, London, SW11

## For Sale: £795,000



**IMPORTANT NOTICE**  
Descriptions of the property are subjective and are used in good faith as an opinion and NOT as a statement of fact. Please make further specific enquires to ensure that our descriptions are likely to match any expectations you may have of the property. We have not tested any services, systems or appliances at this property. We strongly recommend that all the information we provide be verified by you on inspection, and by your Surveyor and Conveyancer.

Seymour Green, 483 Merton Road, London SW18 5LE  
T: 020 8870 0111 F: 020 3302 9598 E: southfields@seymour-green.co.uk W: seymour-green.co.uk