



£550,000 Freehold

Minet Drive, Hayes, UB3

Simple Estate Agents present to the market this six-bed extended terraced house located close to Coldharbour Lane. The property benefits from off street parking, two bathroom/shower rooms, good size kitchen/breakfast room and private rear garden. The property is short walk to Coldharbour Lane, shops, bus stops and local schools. Call to view before this gone

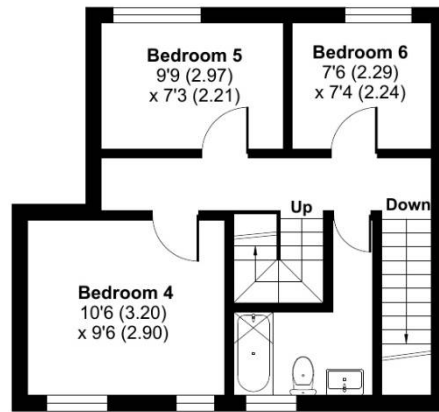
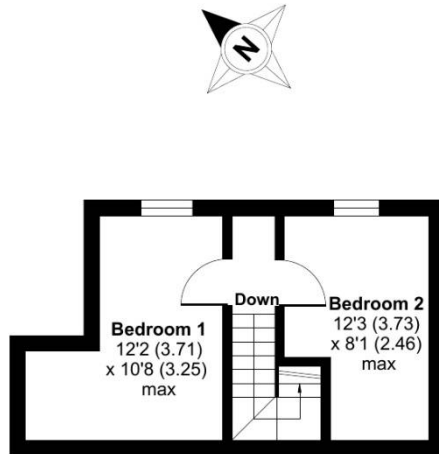
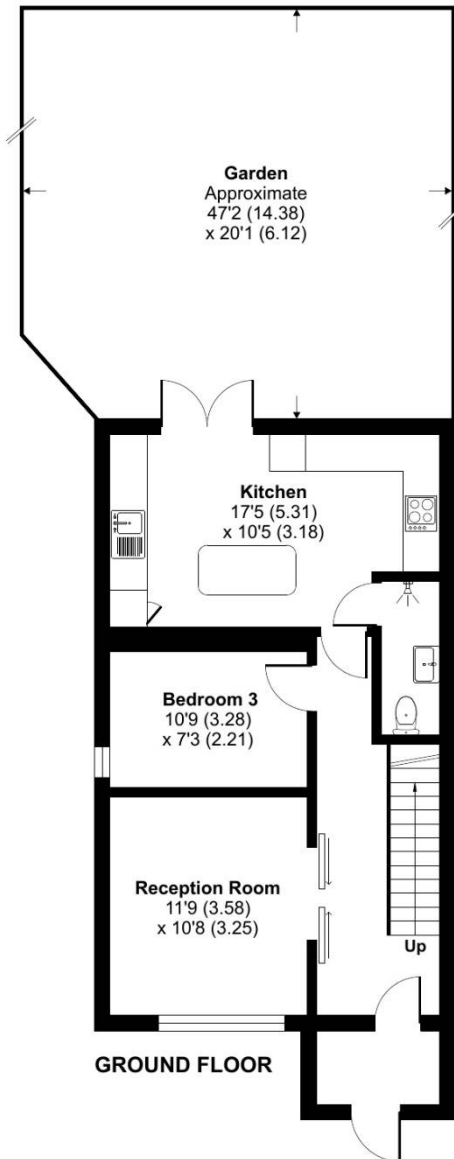
t. 020 8573 4663 f. 020 8561 2606 w. [www.simpleEA.com](http://www.simpleEA.com) e. [info@simpleEA.com](mailto:info@simpleEA.com)

Minet Drive, Hayes, UB3

# Minet Drive, Hayes, UB3

Approximate Area = 1228 sq ft / 114 sq m

For identification only - Not to scale



Floor plan produced in accordance with RICS Property Measurement Standards incorporating International Property Measurement Standards (IPMS2 Residential). © nchecon 2024. Produced for Simple Estate Agents. REF: 1161686

Energy Efficiency Rating		
	Current	Potential
Very energy efficient - lower running costs		
(92-100) <b>A</b>		
(81-91) <b>B</b>		83
(69-80) <b>C</b>		
(55-68) <b>D</b>	66	
(39-54) <b>E</b>		
(21-38) <b>F</b>		
(1-20) <b>G</b>		
Not energy efficient - higher running costs		
<b>England, Scotland &amp; Wales</b>		EU Directive 2002/91/EC

## Directions

UB3 3ES Coldharbour Ln, Hayes Head north-east on Coldharbour Ln towards Hunters Grove ? 0.1 mi Turn right onto Minet Dr Destination will be on the left ? 0.1 mi UB3 3JN Minet Dr, Hayes

Environmental Impact (CO <sub>2</sub> ) Rating		
	Current	Potential
Very environmentally friendly - lower CO <sub>2</sub> emissions		
(92-100) <b>A</b>		
(81-91) <b>B</b>		83
(69-80) <b>C</b>		
(55-68) <b>D</b>	66	
(39-54) <b>E</b>		
(21-38) <b>F</b>		
(1-20) <b>G</b>		
Not environmentally friendly - higher CO <sub>2</sub> emissions		
<b>England, Scotland &amp; Wales</b>		EU Directive 2002/91/EC

General: While we endeavour to make our sales particulars fair, accurate and reliable, they are only a general guide to the property and, accordingly, if there is any point which is of particular importance to you, please contact the office and we will be pleased to check the position for you, especially if you are contemplating travelling some distance to view the property. Measurements: These approximate room sizes are only intended as general guidance. You must verify the dimensions carefully before ordering carpets or any built-in furniture. Services: Please note we have not tested the services or any of the equipment or appliances in this property, accordingly we strongly advise prospective buyers to commission their own survey or service reports before finalizing their offer to purchase. THESE PARTICULARS ARE ISSUED IN GOOD FAITH BUT DO NOT CONSTITUTE REPRESENTATIONS OF FACT OR FORM PART OF ANY OFFER OR CONTRACT. THE MATTERS REFERRED TO IN THESE PARTICULARS SHOULD BE INDEPENDENTLY VERIFIED BY PROSPECTIVE BUYERS OR TENANTS. NEITHER SIMPLE ESTATE AGENTS NOR ANY OF ITS EMPLOYEES OR AGENTS HAS ANY AUTHORITY TO MAKE OR GIVE ANY REPRESENTATION OR WARRANTY WHATEVER IN RELATION TO THIS PROPERTY.