

Dover Branch:
T: 01304 206666

Deal Branch:
T: 01304 365454

Folkestone Branch:
T: 01303 210777



Herne Bay Branch:
T: 01227 360226

Thanet Branch:
T: 01843 210111

Out of hours:
T: 07970 059561

Asking price of £750 per month

Timber Section, Old Flour Mill, London Road, Dover, CT17



- Top Floor Apartment
- Two Bedrooms
- Desirable Location
- Great Transport Links
- Off Road Parking
- Communal Garden
- Ceiling Windows
- Exposed Beams
- Professional tenants only, no pets

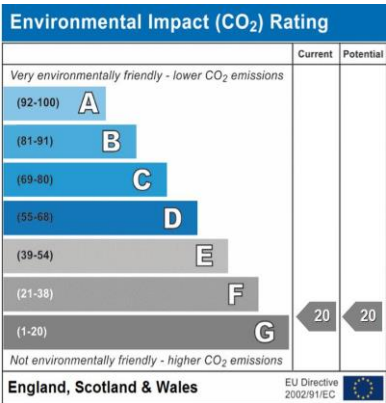
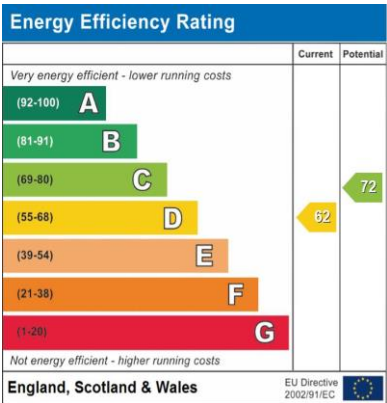
Thomas & Partners is delighted to present this spacious top floor apartment in a converted mill in Dover. To the left of the entrance hall (14' x 5'4") you can find the contemporary fitted kitchen (11'5" x 6'9") and three piece bathroom (7'11" x 5'4"). The apartment has a large lounge measuring (17' x 13') with vaulted ceilings and exposed beams. Next to the second bedroom (8'4" x 6'6") is the master bedroom, which also benefits from a vaulted ceiling and exposed beams and is a generous size (12'9" x 9'6"). This property also includes a communal garden for all residents and a parking space out the front.

Located within easy reach of Dover town centre, this property is close to a plethora of local amenities including a range of pubs, restaurants, high street shops. There is

also a mainline railway station with high speed links to London St Pancras International. There are great transport links in the town and several local primary and secondary schools and East Kent College for higher education. The Cathedral City of Canterbury is situated via A2.

Professional tenants only, no pets.

Timber Section, Old Flour Mill, London Road, Dover, CT17







in B

Approximate Gross Internal Area (Excluding Common Area)
61 sq m / 657 sq ft

FLAT 9, THAMES
THE OLD FLOOR
LONDON RD.
DOVER

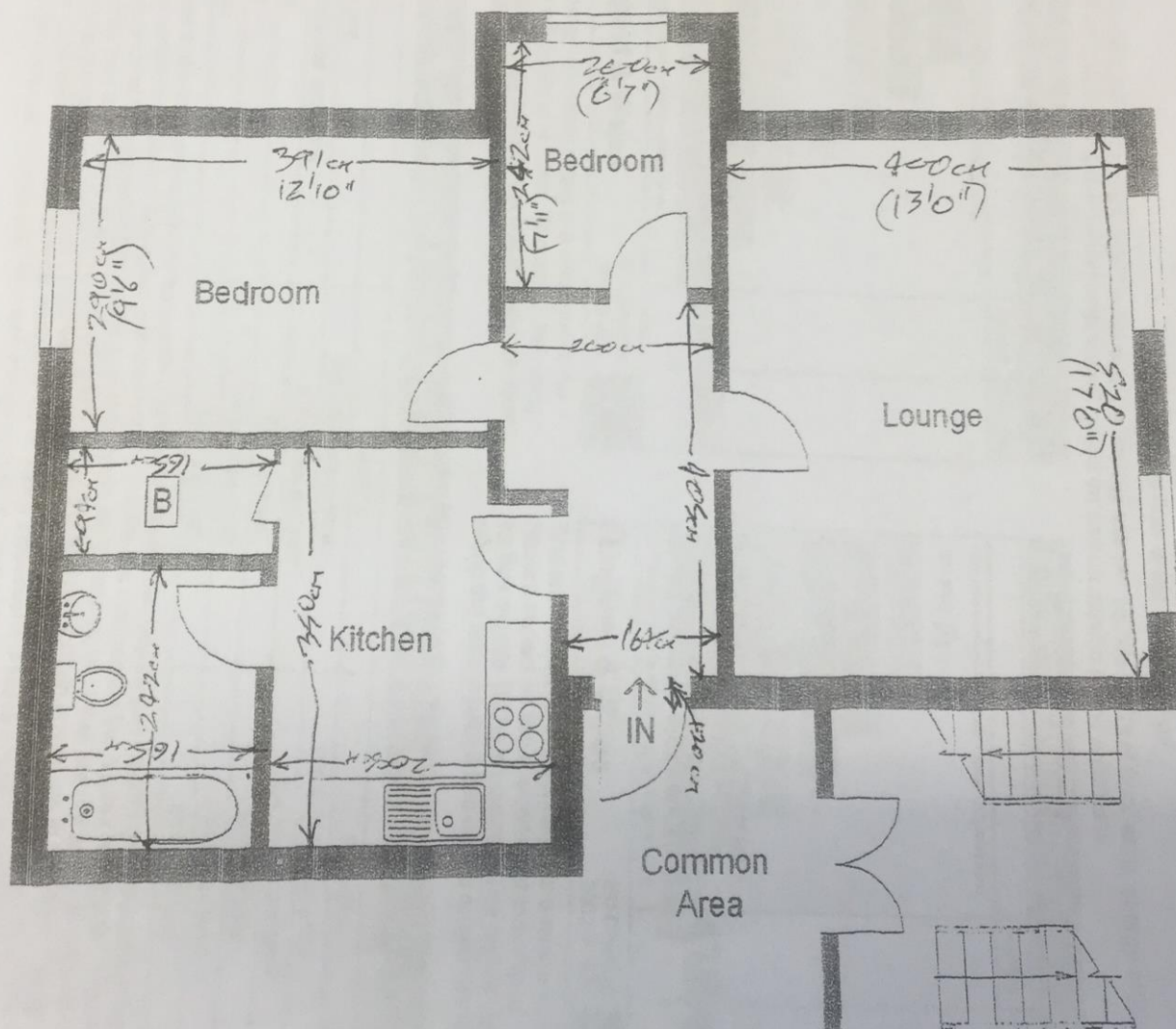
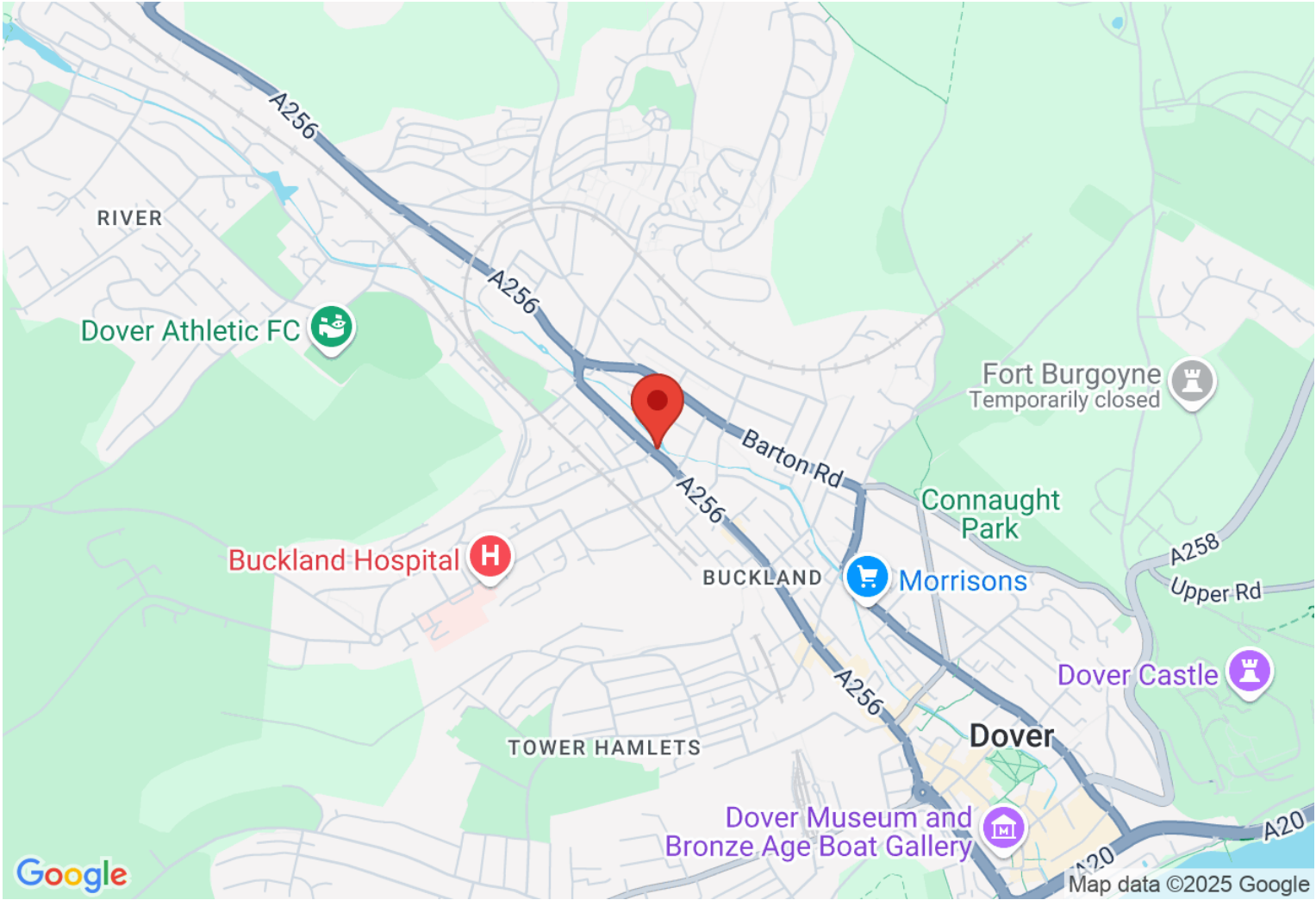


Illustration For Identification Purposes Only. Not To Scale (ID43668 / Ref:21398)

Directions

Location



VIEWING BY APPOINTMENT WITH AGENTS THOMAS AND PARTNERS

10 Victoria Rd, Deal, Kent, CT14 7AP T: 01304 365454 E: enquiries@tapestates.com W: www.tapestates.com

General: While we endeavour to make our sales particulars fair, accurate and reliable, they are only a general guide to the property and, accordingly, if there is any point which is of particular importance to you, please contact the office and we will be pleased to check the position for you, especially if you are contemplating travelling some distance to view the property.

Measurements: These approximate room sizes are only intended as general guidance. You must verify the dimensions carefully before ordering carpets or any built-in furniture. Services: Please note we have not tested the services or any of the equipment or appliances in this property, accordingly we strongly advise prospective buyers to commission their own survey or service reports before finalizing their offer to purchase.

THESE PARTICULARS ARE ISSUED IN GOOD FAITH BUT DO NOT CONSTITUTE REPRESENTATIONS OF FACT OR FORM PART OF ANY OFFER OR CONTRACT. THE MATTERS REFERRED TO IN THESE PARTICULARS SHOULD BE INDEPENDENTLY VERIFIED BY PROSPECTIVE BUYERS OR TENANTS. NEITHER THOMAS AND PARTNERS NOR ANY OF ITS EMPLOYEES OR AGENTS HAS ANY AUTHORITY TO MAKE OR GIVE ANY REPRESENTATION OR WARRANTY WHATEVER IN RELATION TO THIS PROPERTY.

YOUR HOME IS AT RISK IF YOU DO NOT KEEP UP REPAYMENTS ON A MORTGAGE OR OTHER LOAN SECURED ON IT.

Written quotations available on request. All loans secured on property. Life assurance is usually required.