

Dover Branch:
T: 01304 206666

Deal Branch:
T: 01304 365454

Folkestone Branch:
T: 01303 210777



Herne Bay Branch:
T: 01227 360226

Thanet Branch:
T: 01843 210111

Out of hours:
T: 07970 059561

Asking price of £275,000

Charter House, St George's Place, Canterbury, CT1



- New Build Development
- High-Specification & Contemporary Design Features
- Sleek Modern Bathroom
- Ground Floor Apartment
- Open Plan Living Area
- Heat Recovery System
- 34 Luxury Residences
- Stylish High Quality Kitchen
- Close to Waitrose

UNIT 7 - NEW LUXURY APARTMENTS IN THE CITY OF CANTERBURY!

Set within the prestigious Cathedral City of Canterbury, this stunning new build, ground floor apartment is nestled within a brand-new block of 34 luxury residences which are arranged over four floors. Enjoying high-specification and contemporary design features, the apartment is positioned in a prime location and within walking distance to the heart of Canterbury with its wide range of high street shopping,

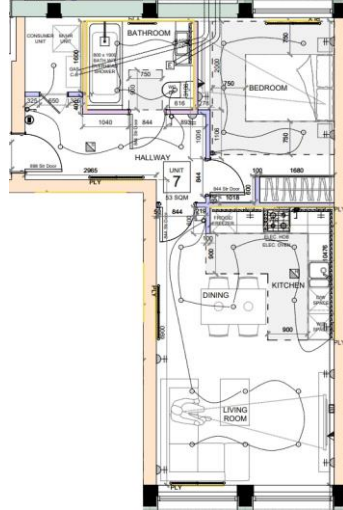
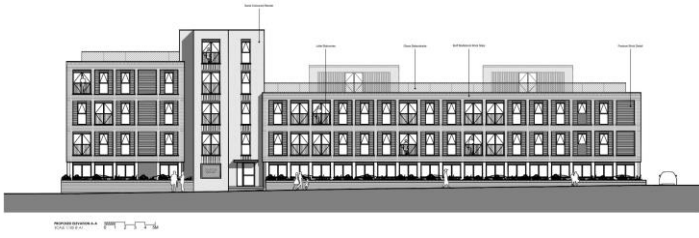
restaurants, nightlife and entertainment including the well-respected Marlowe Theatre. The spacious, modern apartment offers an open plan living area, a sleek fitted kitchen with an extensive range of units and high-quality integrated appliances. Furthermore, there is one double bedroom together with a stylish bathroom. The city of Canterbury is sought after with its rich heritage and extensive range of amenities. Canterbury East & Canterbury West Mainline Railway Stations provide links to London, Ashford, the coastal towns of Dover, Folkestone, Broadstairs & Margate and the high-speed rail connection to London St Pancras in just under one hour. Ashford International Station and the Channel Tunnel at Folkestone are approximately 14 miles away and provide regular Eurostar and shuttle services to the continent, whilst the A2/M2 motorway provides good access to both London and the Channel port of Dover. The city has an excellent bus service to all surrounding towns; the nearest seaside town is Whitstable which offers an array of independent shops and cafes in the bustling old high street and a selection of eateries, market stalls & ice cream parlours on the harbour.

Charter House, St George's Place, Canterbury, CT1

-
-
-

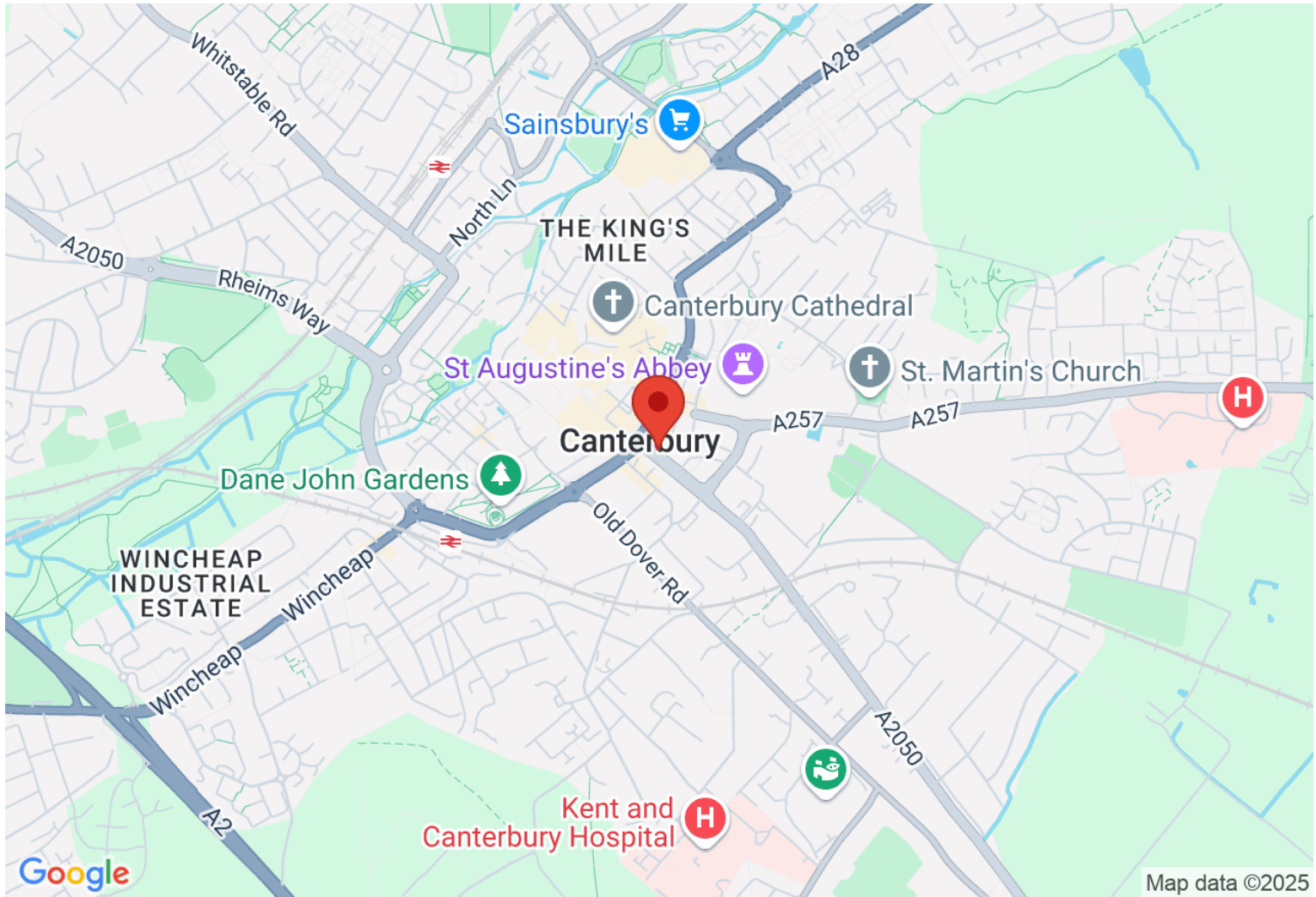






Directions

Location



VIEWING BY APPOINTMENT WITH AGENTS THOMAS AND PARTNERS

10 Victoria Rd, Deal, Kent, CT14 7AP T: 01304 365454 E: enquiries@tapestates.com W: www.tapestates.com

General: While we endeavour to make our sales particulars fair, accurate and reliable, they are only a general guide to the property and, accordingly, if there is any point which is of particular importance to you, please contact the office and we will be pleased to check the position for you, especially if you are contemplating travelling some distance to view the property.

Measurements: These approximate room sizes are only intended as general guidance. You must verify the dimensions carefully before ordering carpets or any built-in furniture.

Services: Please note we have not tested the services or any of the equipment or appliances in this property, accordingly we strongly advise prospective buyers to commission their own survey or service reports before finalizing their offer to purchase.

THESE PARTICULARS ARE ISSUED IN GOOD FAITH BUT DO NOT CONSTITUTE REPRESENTATIONS OF FACT OR FORM PART OF ANY OFFER OR CONTRACT. THE MATTERS REFERRED TO IN THESE PARTICULARS SHOULD BE INDEPENDENTLY VERIFIED BY PROSPECTIVE BUYERS OR TENANTS. NEITHER THOMAS AND PARTNERS NOR ANY OF ITS EMPLOYEES OR AGENTS HAS ANY AUTHORITY TO MAKE OR GIVE ANY REPRESENTATION OR WARRANTY WHATEVER IN RELATION TO THIS PROPERTY.

YOUR HOME IS AT RISK IF YOU DO NOT KEEP UP REPAYMENTS ON A MORTGAGE OR OTHER LOAN SECURED ON IT.

Written quotations available on request. All loans secured on property. Life assurance is usually required.