

Dover Branch:
T: 01304 206666

Deal Branch:
T: 01304 365454

Folkestone Branch:
T: 01303 210777



Herne Bay Branch:
T: 01227 360226

Thanet Branch:
T: 01843 210111

Out of hours:
T: 07970 059561

£925 per month

Timber Section, London Road, Dover, CT17

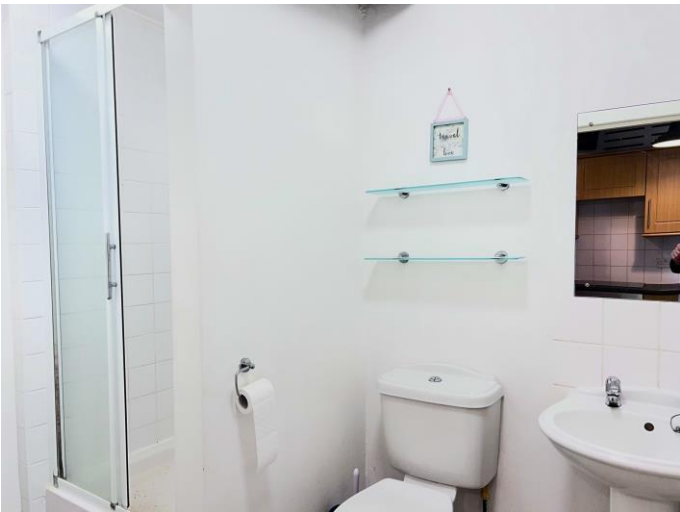


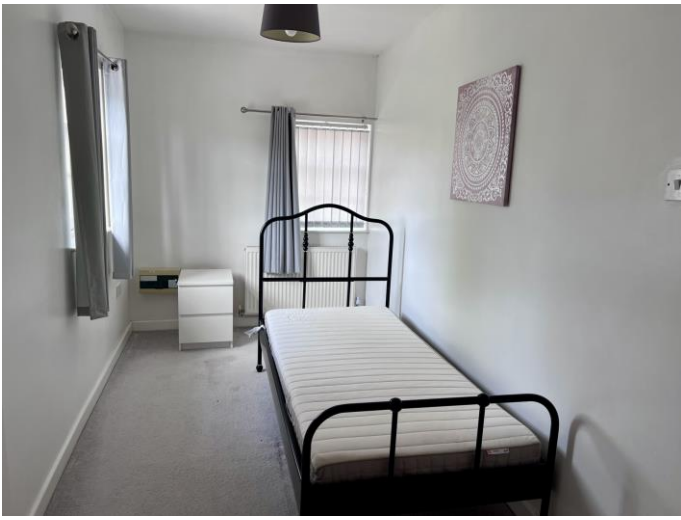
- Two Bedroom
- Historic Former Flour Mill
- Ready Now
- Close To Town Centre
- Riverside location
- 2nd Floor
- Open Plan living Dining
- Modern kitchen Area
- Walk In Shower

No 5 Timber Section is a two bedroom well maintained airy second floor flat within the historic river side flour mill, the accommodation consists of two bedrooms open plan lounge kitchen diner space and modern bathroom all recently refurbished and ready to move in to.

Timber Section, London Road, Dover, CT17

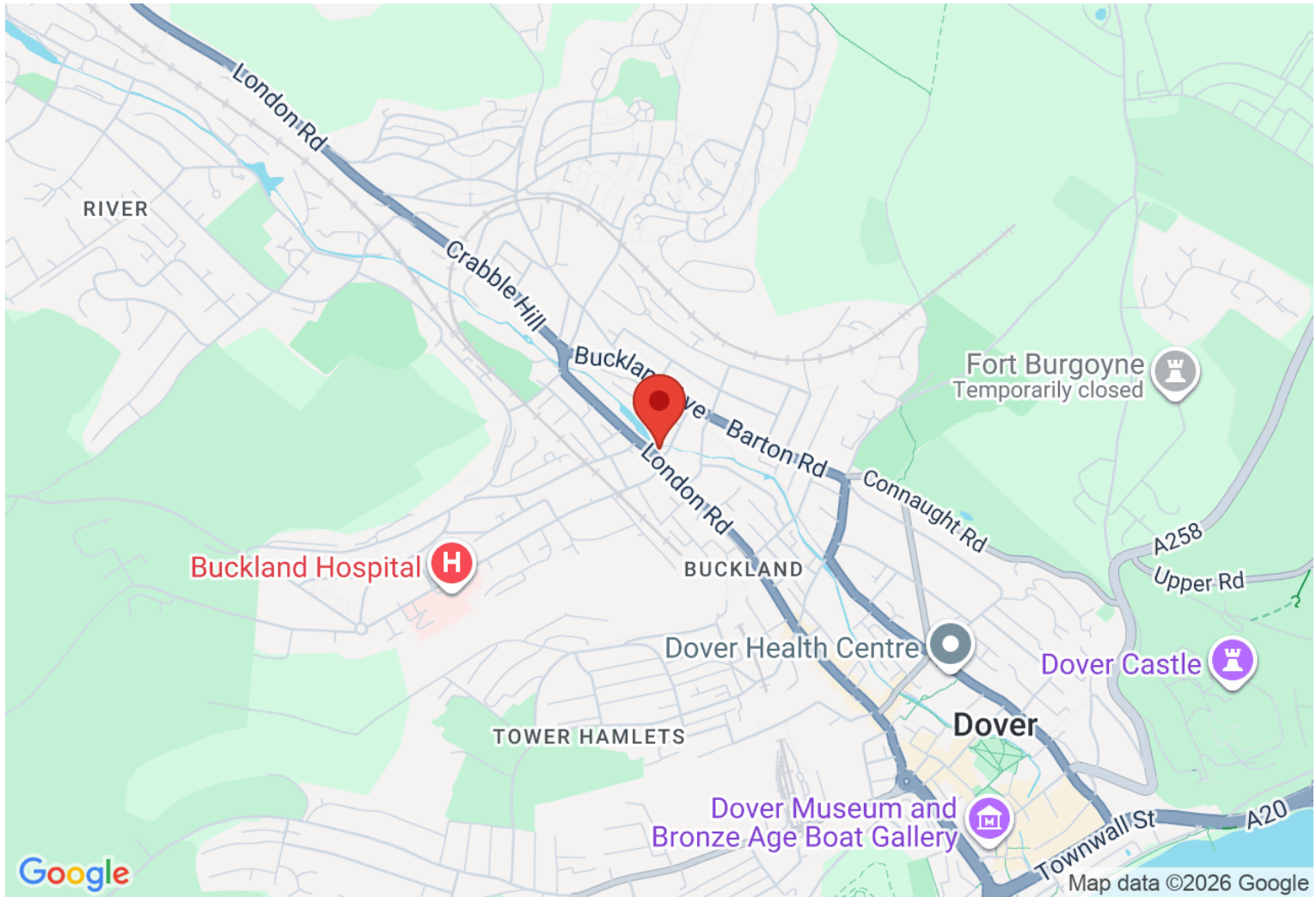






Directions

Location



VIEWING BY APPOINTMENT WITH AGENTS THOMAS AND PARTNERS

10 Victoria Rd, Deal, Kent, CT14 7AP T: 01304 365454 E: enquiries@tapestates.com W: www.tapestates.com

General: While we endeavour to make our sales particulars fair, accurate and reliable, they are only a general guide to the property and, accordingly, if there is any point which is of particular importance to you, please contact the office and we will be pleased to check the position for you, especially if you are contemplating travelling some distance to view the property.

Measurements: These approximate room sizes are only intended as general guidance. You must verify the dimensions carefully before ordering carpets or any built-in furniture.

Services: Please note we have not tested the services or any of the equipment or appliances in this property, accordingly we strongly advise prospective buyers to commission their own survey or service reports before finalizing their offer to purchase.

THESE PARTICULARS ARE ISSUED IN GOOD FAITH BUT DO NOT CONSTITUTE REPRESENTATIONS OF FACT OR FORM PART OF ANY OFFER OR CONTRACT. THE MATTERS REFERRED TO IN THESE PARTICULARS SHOULD BE INDEPENDENTLY VERIFIED BY PROSPECTIVE BUYERS OR TENANTS. NEITHER THOMAS AND PARTNERS NOR ANY OF ITS EMPLOYEES OR AGENTS HAS ANY AUTHORITY TO MAKE OR GIVE ANY REPRESENTATION OR WARRANTY WHATEVER IN RELATION TO THIS PROPERTY.

YOUR HOME IS AT RISK IF YOU DO NOT KEEP UP REPAYMENTS ON A MORTGAGE OR OTHER LOAN SECURED ON IT.

Written quotations available on request. All loans secured on property. Life assurance is usually required.