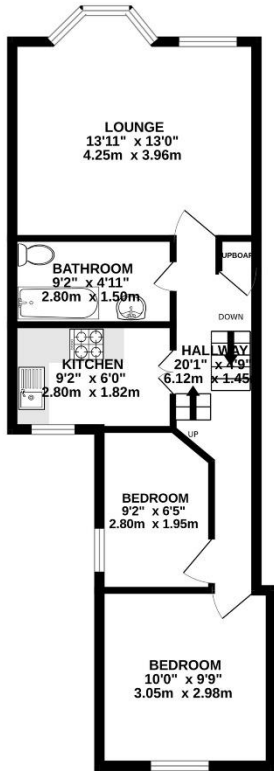


GROUND FLOOR  
496 sq.ft. (46.1 sq.m.) approx.



#### 2 BEDROOM FLAT

TOTAL FLOOR AREA: 496 sq.ft. (46.1 sq.m.) approx.

Whilst every attempt has been made to ensure the accuracy of the floorplan contained here, measurements of doors, windows, rooms and any other items are approximate and no responsibility is taken for any error, omission or mis-statement. This plan is for illustrative purposes only and should be used as such by any prospective purchaser. The services, systems and appliances shown have not been tested and no guarantee as to their operability or efficiency can be given.  
Made with Metropix ©2025



Sandringham Road,  
Cricklewood, NW2

Asking price of  
£350,000 Long Lease

# Sandringham Road, Cricklewood, NW2

Asking price of £350,000 Long Lease

- 2 Bedroom flat
- Generous sized living room
- Unfurnished
- Close to schools
- Close to transport links
- First floor (top flat)
- Modern decor
- Gas central heating
- Close to amenities
- Available now

Modern 2-bed flat in vibrant Willesden, featuring a bright and spacious reception room with large windows and a stylish feature fireplace. Built-in storage adds a sleek, uncluttered feel, complemented by a well-appointed bathroom. Moments from Dollis Hill station ??, with supermarkets, shops and cafés close by. Ideal for professionals, couples or small families seeking contemporary living and great convenience. Arrange a viewing today! ??



Top Move Estate Agents

77 South South End, Croydon, CR0 1BF

020 8683 0012

[sales@top-moveuk.com](mailto:sales@top-moveuk.com)