

Neon Court, High Street, Barkingside, IG6

£232 per week



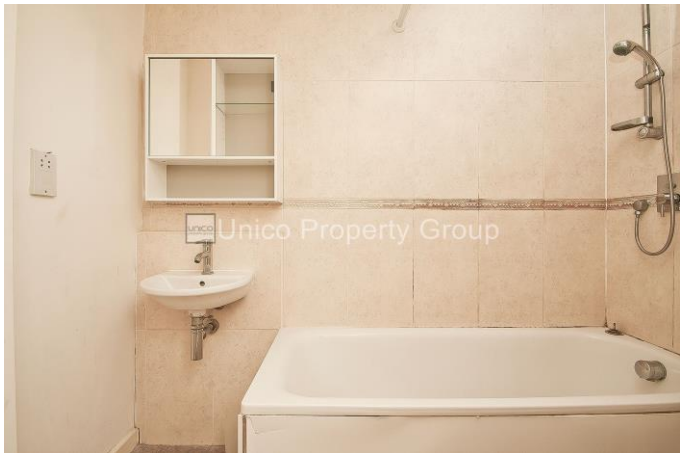
Boasting stylish and modern accommodation throughout and enjoying a great location only moments away from Barkingside Tube Station, this light and airy one bed roomed flat is set within a well maintained block and features wood floors and neutral décor.



unicopropertygroup.com

Sales - Lettings - Property Management





Neon Court, High Street, Barkingside, IG6

Boasting stylish and modern accommodation throughout and enjoying a great location only moments away from Barkingside Tube Station, this light and airy one bedroomed flat is set within a well maintained block and features wood floors and neutral décor.

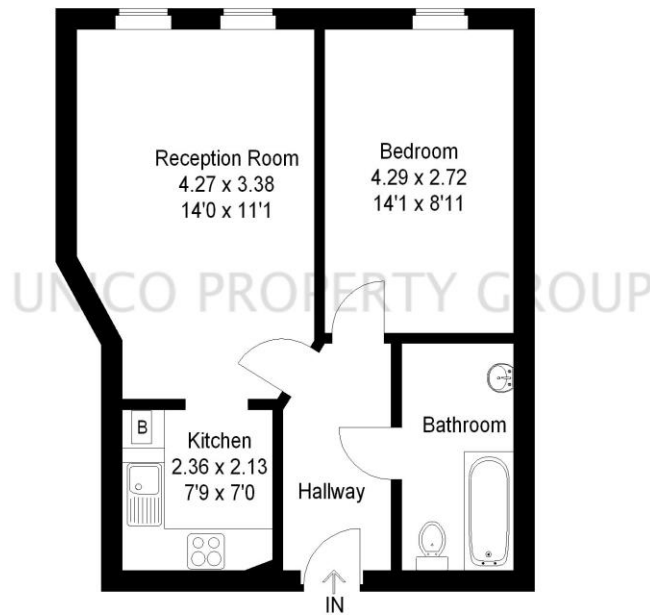
This charming property, which is offered in excellent condition throughout, comprises a bright reception room, contemporary and sizable fitted kitchen, good-sized bedroom and bathroom.

Situated just moments from the many shops, restaurants and bars of Barkingside, Hainault and Newbury Park and with short distance away for a comprehensive and diverse selection of local amenities, this property is also only moments from Fairlop and Barkingside Tube Stations for those wishing to travel into central London; the motorists benefit from easy access to the A12, while the nearby Fairlop Waters Country Park provide open green areas to relax.



Neon Court

Approximate Gross Internal Area = 46 sq m / 495 sq ft



This plan is for layout guidance only. Not drawn to scale unless stated. Windows and door openings are approximate. Whilst every care is taken in the preparation of this plan, please check all dimensions, shapes and compass bearings before making any decisions reliant upon them. (ID114380)

Energy Efficiency Rating		
	Current	Potential
Very energy efficient - lower running costs		
(92-100) A		
(81-91) B	83	84
(69-80) C		
(55-68) D		
(39-54) E		
(21-38) F		
(1-20) G		
Not energy efficient - higher running costs		
England & Wales	EU Directive 2002/91/EC	

Environmental Impact (CO ₂) Rating		
	Current	Potential
Very environmentally friendly - lower CO ₂ emissions		
(92-100) A		
(81-91) B	81	83
(69-80) C		
(55-68) D		
(39-54) E		
(21-38) F		
(1-20) G		
Not environmentally friendly - higher CO ₂ emissions		
England & Wales	EU Directive 2002/91/EC	