

The Driftway, Grove Road, London, E3

£1,800 per month



This is an exceptional two bedroomed flat set within this period conversation with spacious living throughout, which benefits from stunning light-filled rooms with original features, ideally located on Grove Road walking distance to Mile End Tube Station and Victoria Park.



unicopropertygroup.com

Sales - Lettings - Property Management





The Driftway, Grove Road, London, E3

Located within a sought-after residential area on Grove Road overlooking a green space, this generous and outstanding newly decorated two bedroomed flat set within this period conversation, offers ample living space with original features, bright and well-proportioned living and entertaining space and it boasts high ceilings and wooden floors.

The property comprises reception room, fitted kitchen, two generous and airy double bedrooms, and family bathroom.

The property is located moments from the shops, restaurants and bars of Bow, and the green open space of Victoria Park.

Mile End is only a short walk while the green open spaces of Victoria Park is only moments away.

Local transport links include Mile End Tube Station, Bow Road Tube Station and Bow Church DLR providing quick and reliable links throughout London (Central, District, Hammersmith and City and DLR Lines). These include reliable bus routes into the City and the West End and the motorists will find easy access to the A12 for routes in and out of London.

The Driftway, Grove Road

Approximate Gross Internal Area = 61.0 sq m / 657 sq ft

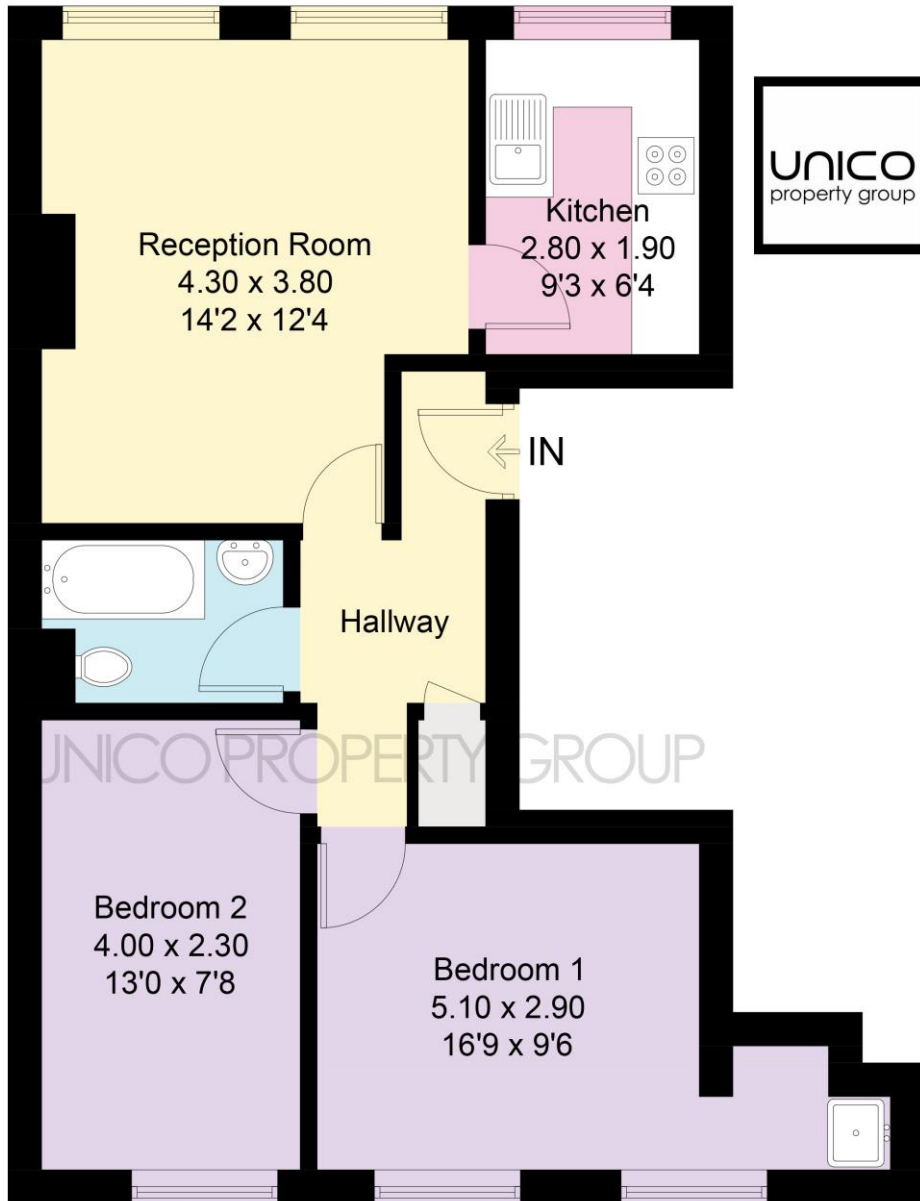


Illustration for identification purposes only, measurements are approximate, not to scale. (ID687218)

Energy Efficiency Rating		Current	Potential
Very energy efficient - lower running costs			
(92-100) A			
(81-91) B			
(69-80) C			
(55-68) D		63	73
(39-54) E			
(21-38) F			
(1-20) G			
Not energy efficient - higher running costs			
England, Scotland & Wales	EU Directive 2002/91/EC		

Environmental Impact (CO ₂) Rating		Current	Potential
Very environmentally friendly - lower CO ₂ emissions			
(92-100) A			
(81-91) B			
(69-80) C			
(55-68) D		62	75
(39-54) E			
(21-38) F			
(1-20) G			
Not environmentally friendly - higher CO ₂ emissions			
England, Scotland & Wales	EU Directive 2002/91/EC		